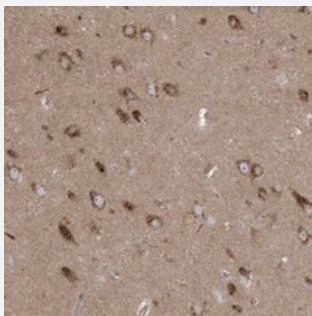


KLHL18 polyclonal antibody

Catalog # PAB22844 Size 100 uL

Applications



Immunohistochemistry (Formalin/PFA-fixed paraffin-embedded sections)

Immunohistochemical staining of human hippocampus with KLHL18 polyclonal antibody (Cat # PAB22844) shows strong cytoplasmic positivity in neuronal cells.

Specification

Product Description	Rabbit polyclonal antibody raised against recombinant KLHL18.
Immunogen	Recombinant protein corresponding to amino acids of human KLHL18.
Sequence	SAAGVTVFEGRIYVSGGHDGLQIFSSVEHYNHHTATWHPAAGMLNKRCRHGAASLGSKMFVCGG YDGSGLSLIAEMYSSVADQWCLVPMHT
Host	Rabbit
Reactivity	Human
Form	Liquid
Purification	Antigen affinity purification
Isotype	IgG
Recommend Usage	Immunohistochemistry (1:20-1:50) The optimal working dilution should be determined by the end user.
Storage Buffer	In PBS, pH 7.2 (40% glycerol, 0.02% sodium azide)

Storage Instruction

Store at 4°C. For long term storage store at -20°C.
Aliquot to avoid repeated freezing and thawing.

Note

This product contains sodium azide: a POISONOUS AND HAZARDOUS SUBSTANCE which should be handled by trained staff only.

Applications

- Immunohistochemistry (Formalin/PFA-fixed paraffin-embedded sections)

Immunohistochemical staining of human hippocampus with KLHL18 polyclonal antibody (Cat # PAB22844) shows strong cytoplasmic positivity in neuronal cells.

Gene Info — KLHL18

Entrez GeneID[23276](#)**Protein Accession#**[O94889](#)**Gene Name**

KLHL18

Gene Alias

FLJ13703, FLJ61265, KIAA0795

Gene Description

kelch-like 18 (Drosophila)

Gene Ontology[Hyperlink](#)**Other Designations**

kelch-like 18