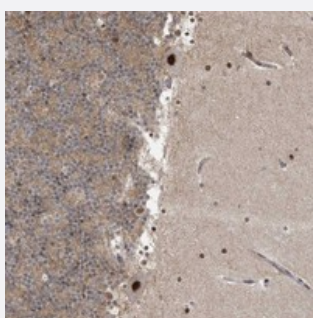


# TNMD polyclonal antibody

Catalog # PAB22840

Size 100 uL

## Applications



### Immunohistochemistry (Formalin/PFA-fixed paraffin-embedded sections)

Immunohistochemical staining of human cerebellum with TNMD polyclonal antibody (Cat # PAB22840) shows strong nuclear positivity in purkinje cells at 1:50-1:200 dilution.

## Specification

<b>Product Description</b>	Rabbit polyclonal antibody raised against recombinant TNMD.
<b>Immunogen</b>	Recombinant protein corresponding to amino acids of human TNMD.
<b>Sequence</b>	GIEFDPM LDERGYCCY CRRGNRYCRRVCEPLLGYYPYPYCYQGGRVICRV
<b>Host</b>	Rabbit
<b>Reactivity</b>	Human
<b>Form</b>	Liquid
<b>Purification</b>	Antigen affinity purification
<b>Isotype</b>	IgG
<b>Recommend Usage</b>	Immunohistochemistry (1:50-1:200) The optimal working dilution should be determined by the end user.
<b>Storage Buffer</b>	In PBS, pH 7.2 (40% glycerol, 0.02% sodium azide)
<b>Storage Instruction</b>	Store at 4°C. For long term storage store at -20°C. Aliquot to avoid repeated freezing and thawing.

**Note**

This product contains sodium azide: a POISONOUS AND HAZARDOUS SUBSTANCE which should be handled by trained staff only.

## Applications

- Immunohistochemistry (Formalin/PFA-fixed paraffin-embedded sections)

Immunohistochemical staining of human cerebellum with TNMD polyclonal antibody (Cat # PAB22840) shows strong nuclear positivity in purkinje cells at 1:50-1:200 dilution.

## Gene Info — TNMD

Entrez GeneID [64102](#)

Protein Accession# [Q9H2S6](#)

Gene Name TNMD

Gene Alias BRICD4, CHM1-LIKE, CHM1L, TEM

Gene Description tenomodulin

Omim ID [300459](#)

Gene Ontology [Hyperlink](#)

**Gene Summary** This gene encodes a protein that is related to chondromodulin-I, which is a cartilage-specific glycoprotein that functions to stimulate chondrocyte growth and to inhibit tube formation of endothelial cells. This protein is also an angiogenesis inhibitor. Genetic variation in this gene is associated with a risk for type 2 diabetes, central obesity and serum levels of systemic immune mediators in a body size-dependent manner. This gene is also a candidate gene for age-related macular degeneration, though a direct link has yet to be demonstrated. [provided by RefSeq]

**Other Designations** BRICHOS domain containing 4|OTTHUMP00000023651|chondromodulin I-like|myodulin|tendin|tenomodulin protein

## Disease

- [Alzheimer disease](#)
- [Diabetes Mellitus](#)
- [Genetic Predisposition to Disease](#)

- [Glucose Intolerance](#)
- [Macular Degeneration](#)
- [Metabolic Syndrome X](#)
- [Obesity](#)