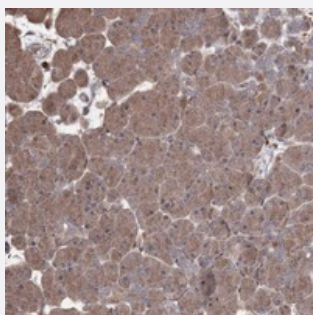


# OPTC polyclonal antibody

Catalog # PAB22838      Size 100 uL

## Applications



### Immunohistochemistry (Formalin/PFA-fixed paraffin-embedded sections)

Immunohistochemical staining of human pancreas with OPTC polyclonal antibody (Cat # PAB22838) shows moderate cytoplasmic positivity in exocrine pancreas at 1:20-1:50 dilution.

## Specification

|                            |  |
|----------------------------|--|
| <b>Product Description</b> | Rabbit polyclonal antibody raised against recombinant OPTC.  |
| <b>Immunogen</b>           | Recombinant protein corresponding to amino acids of human OPTC.  |
| <b>Sequence</b>            | RIDLSNNLISSIDNDAFRLLHALQDLILPENQLEALPVLPSGIEFLDVRLNRLQSSGIQPAAFRAMEK<br>LQFLYLSDNLLDSIP                |
| <b>Host</b>                | Rabbit   |
| <b>Reactivity</b>          | Human  |
| <b>Form</b>                | Liquid   |
| <b>Purification</b>        | Antigen affinity purification  |
| <b>Isotype</b>             | IgG  |
| <b>Recommend Usage</b>     | Immunohistochemistry (1:20-1:50)<br>The optimal working dilution should be determined by the end user. |
| <b>Storage Buffer</b>      | In PBS, pH 7.2 (40% glycerol, 0.02% sodium azide)  |

**Storage Instruction**

Store at 4°C. For long term storage store at -20°C.  
Aliquot to avoid repeated freezing and thawing.

**Note**

This product contains sodium azide: a POISONOUS AND HAZARDOUS SUBSTANCE which should be handled by trained staff only.

## Applications

- Immunohistochemistry (Formalin/PFA-fixed paraffin-embedded sections)

Immunohistochemical staining of human pancreas with OPTC polyclonal antibody (Cat # PAB22838) shows moderate cytoplasmic positivity in exocrine pancreas at 1:20-1:50 dilution.

## Gene Info — OPTC

Entrez GeneID [26254](#)

Protein Accession# [Q9UBM4](#)

Gene Name OPTC

Gene Alias OPT

Gene Description opticin

Omim ID [605127](#)

Gene Ontology [Hyperlink](#)

**Gene Summary**

Opticin belongs to class III of the small leucine-rich repeat protein (SLRP) family. Members of this family are typically associated with the extracellular matrix. Opticin is present in significant quantities in the vitreous of the eye and also localizes to the cornea, iris, ciliary body, optic nerve, choroid, retina, and fetal liver. Opticin may noncovalently bind collagen fibrils and regulate fibril morphology, spacing, and organization. The opticin gene is mapped to a region of chromosome 1 that is associated with the inherited eye diseases age-related macular degeneration (AMD) and posterior column ataxia with retinosa pigmentosa (AXPC1). [provided by RefSeq]

Other Designations OTTHUMP00000034332|pculoglycan

## Disease

- [Genetic Predisposition to Disease](#)
- [Glaucoma](#)

- [Hypertension](#)
- [Myopia](#)