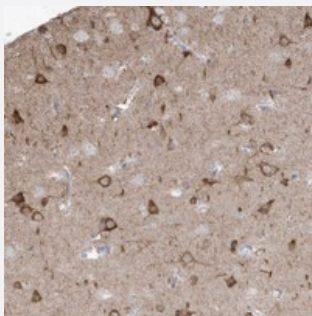


GTPBP8 polyclonal antibody

Catalog # PAB22833 Size 100 uL

Applications



Immunohistochemistry (Formalin/PFA-fixed paraffin-embedded sections)

Immunohistochemical staining of human cerebral cortex with GTPBP8 polyclonal antibody (Cat # PAB22833) shows strong cytoplasmic positivity in neuronal cells.

Specification

Product Description	Rabbit polyclonal antibody raised against recombinant GTPBP8.
Immunogen	Recombinant protein corresponding to amino acids of human GTPBP8.
Sequence	AGRLFEMPAVLRLSRYNSTSQAFAEVLRRLPKQQLRKLLYPLQEVERFLAPYGRQDLHLRIFDPS PEDIARADNIFTATERNRIDYVSS
Host	Rabbit
Reactivity	Human
Form	Liquid
Purification	Antigen affinity purification
Isotype	IgG
Recommend Usage	Immunohistochemistry (1:1000-1:2500) The optimal working dilution should be determined by the end user.
Storage Buffer	In PBS, pH 7.2 (40% glycerol, 0.02% sodium azide)

Storage Instruction

Store at 4°C. For long term storage store at -20°C.
Aliquot to avoid repeated freezing and thawing.

Note

This product contains sodium azide: a POISONOUS AND HAZARDOUS SUBSTANCE which should be handled by trained staff only.

Applications

- Immunohistochemistry (Formalin/PFA-fixed paraffin-embedded sections)

Immunohistochemical staining of human cerebral cortex with GTPBP8 polyclonal antibody (Cat # PAB22833) shows strong cytoplasmic positivity in neuronal cells.

Gene Info — GTPBP8

Entrez GeneID [29083](#)

Protein Accession# [Q8N3Z3](#)

Gene Name GTPBP8

Gene Alias HSPC135

Gene Description GTP-binding protein 8 (putative)

Gene Ontology [Hyperlink](#)

Other Designations GTP-binding protein 8

Disease

- [Tobacco Use Disorder](#)