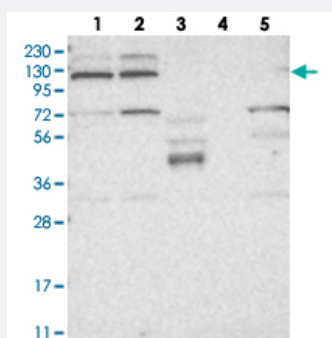


# KIF4A polyclonal antibody

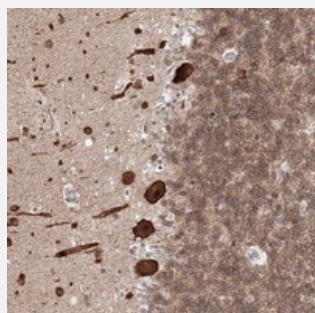
Catalog # PAB22822      Size 100 uL

## Applications



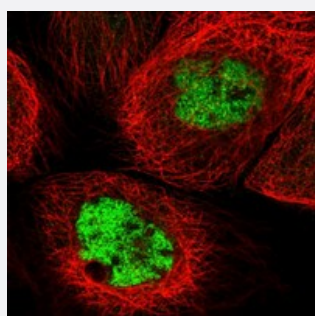
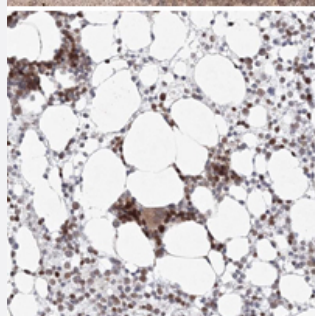
### Western Blot

Western blot analysis of Lane 1: RT-4, Lane 2: U-251 MG, Lane 3: Human Plasma, Lane 4: Liver, Lane 5: Tonsil with KIF4A polyclonal antibody (Cat # PAB22822) at 1:250-1:500 dilution.



### Immunohistochemistry (Formalin/PFA-fixed paraffin-embedded sections)

Immunohistochemical staining of human bone marrow with KIF4A polyclonal antibody (Cat # PAB22822) shows strong nuclear positivity in hematopoietic cells at 1:50-1:200 dilution.



### Immunofluorescence

Immunofluorescent staining of human cell line A-431 with KIF4A polyclonal antibody (Cat # PAB22822) at 1-4 ug/mL dilution shows positivity in nucleus but not nucleoli.

## Specification

<b>Product Description</b>	Rabbit polyclonal antibody raised against recombinant KIF4A.
<b>Immunogen</b>	Recombinant protein corresponding to amino acids of human KIF4A.
<b>Sequence</b>	SDETVACMAAAIDTAVEQEAEQVETSPETSRSSDAFTTQHALRQAQMSKELVELNKALALKEALA RKMTQNDSQLQPIQYQYQDN
<b>Host</b>	Rabbit
<b>Reactivity</b>	Human
<b>Form</b>	Liquid
<b>Purification</b>	Antigen affinity purification
<b>Isotype</b>	IgG
<b>Recommend Usage</b>	Immunohistochemistry (1:50-1:200) Western Blot (1:250-1:500) Immunofluorescence (1-4 ug/mL) The optimal working dilution should be determined by the end user.
<b>Storage Buffer</b>	In PBS, pH 7.2 (40% glycerol, 0.02% sodium azide)
<b>Storage Instruction</b>	Store at 4°C. For long term storage store at -20°C. Aliquot to avoid repeated freezing and thawing.
<b>Note</b>	This product contains sodium azide: a POISONOUS AND HAZARDOUS SUBSTANCE which should be handled by trained staff only.

## Applications

- Western Blot

Western blot analysis of Lane 1: RT-4, Lane 2: U-251 MG, Lane 3: Human Plasma, Lane 4: Liver, Lane 5: Tonsil with KIF4A polyclonal antibody (Cat # PAB22822) at 1:250-1:500 dilution.

- Immunohistochemistry (Formalin/PFA-fixed paraffin-embedded sections)

Immunohistochemical staining of human bone marrow with KIF4A polyclonal antibody (Cat # PAB22822) shows strong nuclear positivity in hematopoietic cells at 1:50-1:200 dilution.

- Immunofluorescence

Immunofluorescent staining of human cell line A-431 with KIF4A polyclonal antibody (Cat # PAB22822) at 1-4 ug/mL dilution shows positivity in nucleus but not nucleoli.

## Gene Info — KIF4A

**Entrez GeneID** [24137](#)**Protein Accession#** [O95239](#)**Gene Name** KIF4A**Gene Alias** FLJ12530, FLJ12655, FLJ14204, FLJ20631, HSA271784, KIF4, KIF4-G1**Gene Description** kinesin family member 4A**Omim ID** [300521](#)**Gene Ontology** [Hyperlink](#)

**Gene Summary** Kinesins, such as KIF4A, are microtubule-based motor proteins that generate directional movement along microtubules. They are involved in many crucial cellular processes, including cell division (Zhu and Jiang, 2005 [PubMed 15625105]).[supplied by OMIM]

**Other Designations** OTTHUMP00000023473|chromokinesin|kinesin family member 4