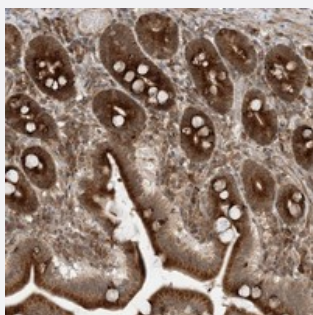


# METTL21A polyclonal antibody

Catalog # PAB22818      Size 100 uL

## Applications



### Immunohistochemistry (Formalin/PFA-fixed paraffin-embedded sections)

Immunohistochemical staining of human duodenum with METTL21A polyclonal antibody (Cat # PAB22818) strong cytoplasmic positivity in glandular cells at 1:50-1:200 dilution.

## Specification

<b>Product Description</b>	Rabbit polyclonal antibody raised against recombinant METTL21A.
<b>Immunogen</b>	Recombinant protein corresponding to amino acids of human METTL21A.
<b>Sequence</b>	EHLCSNHSVILLACRIRYERDNNFLAMLERQFIVRKVHYDPEKDVHIYEAQKRNQKEDL
<b>Host</b>	Rabbit
<b>Reactivity</b>	Human
<b>Form</b>	Liquid
<b>Purification</b>	Antigen affinity purification
<b>Isotype</b>	IgG
<b>Recommend Usage</b>	Immunohistochemistry (1:50-1:200) The optimal working dilution should be determined by the end user.
<b>Storage Buffer</b>	In PBS, pH 7.2 (40% glycerol, 0.02% sodium azide)
<b>Storage Instruction</b>	Store at 4°C. For long term storage store at -20°C. Aliquot to avoid repeated freezing and thawing.

**Note**

This product contains sodium azide: a POISONOUS AND HAZARDOUS SUBSTANCE which should be handled by trained staff only.

## Applications

- Immunohistochemistry (Formalin/PFA-fixed paraffin-embedded sections)

Immunohistochemical staining of human duodenum with METTL21A polyclonal antibody (Cat # PAB22818) strong cytoplasmic positivity in glandular cells at 1:50-1:200 dilution.

## Gene Info — METTL21A

Entrez GeneID	<a href="#">151194</a>
Protein Accession#	<a href="#">Q8WXB1</a>
Gene Name	METTL21A
Gene Alias	FAM119A, HCA557b
Gene Description	methyltransferase like 21A
Gene Ontology	<a href="#">Hyperlink</a>
Gene Summary	family with sequence similarity 119
Other Designations	family with sequence similarity 119, member A; hepatocellular carcinoma-associated antigen 557 b; methyltransferase-like protein 21A