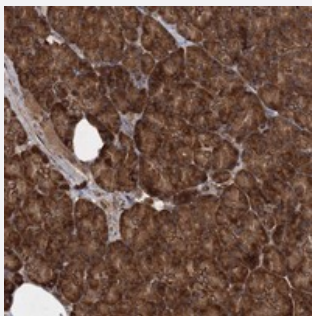


# SCRN3 polyclonal antibody

Catalog # PAB22815      Size 100 uL

## Applications



### Immunohistochemistry (Formalin/PFA-fixed paraffin-embedded sections)

Immunohistochemical staining of human pancreas with SCRN3 polyclonal antibody (Cat # PAB22815) shows strong cytoplasmic positivity in exocrine glandular cells.

## Specification

Product Description	Rabbit polyclonal antibody raised against recombinant SCRN3.
Immunogen	Recombinant protein corresponding to amino acids of human SCRN3.
Sequence	DMRNYAKRKGWWDGKKEFDFAAAYSYLDTAKMMTSSGRYCEGYKLLNKHKGNITFETMMEILRD KPSGINMEGEFLTTA
Host	Rabbit
Reactivity	Human
Form	Liquid
Purification	Antigen affinity purification
Isotype	IgG
Recommend Usage	Immunohistochemistry (1:200-1:500) The optimal working dilution should be determined by the end user.
Storage Buffer	In PBS, pH 7.2 (40% glycerol, 0.02% sodium azide)

**Storage Instruction**

Store at 4°C. For long term storage store at -20°C.  
Aliquot to avoid repeated freezing and thawing.

**Note**

This product contains sodium azide: a POISONOUS AND HAZARDOUS SUBSTANCE which should be handled by trained staff only.

## Applications

- Immunohistochemistry (Formalin/PFA-fixed paraffin-embedded sections)

Immunohistochemical staining of human pancreas with SCR3 polyclonal antibody (Cat # PAB22815) shows strong cytoplasmic positivity in exocrine glandular cells.

## Gene Info — SCR3

**Entrez GeneID**[79634](#)**Protein Accession#**[Q0VDG4](#)**Gene Name**

SCR3

**Gene Alias**

FLJ23142, MGC149597, SES3

**Gene Description**

secernin 3

**Gene Ontology**[Hyperlink](#)**Other Designations**

-