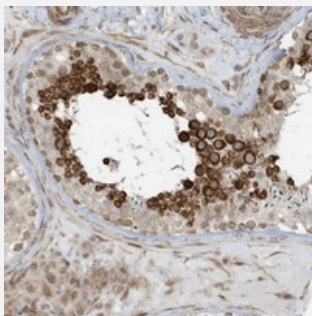


CHCHD4 polyclonal antibody

Catalog # PAB22814 Size 100 uL

Applications



Immunohistochemistry (Formalin/PFA-fixed paraffin-embedded sections)

Immunohistochemical staining of human testis with CHCHD4 polyclonal antibody (Cat # PAB22814) shows strong cytoplasmic positivity in cells in seminiferous ducts at 1:500-1:1000 dilution.

Specification

Product Description	Rabbit polyclonal antibody raised against recombinant CHCHD4.
Immunogen	Recombinant protein corresponding to amino acids of human CHCHD4.
Sequence	ELVADDPNDPYEEHGLLPNGNINWNCPLGGMASGPCGEQFKSAFSCFHYTEEIKGSDCVDQ FRAMQECCMQKYPDL
Host	Rabbit
Reactivity	Human
Form	Liquid
Purification	Antigen affinity purification
Isotype	IgG
Recommend Usage	Immunohistochemistry (1:1000-1:2500) The optimal working dilution should be determined by the end user.
Storage Buffer	In PBS, pH 7.2 (40% glycerol, 0.02% sodium azide)

Storage Instruction

Store at 4°C. For long term storage store at -20°C.
Aliquot to avoid repeated freezing and thawing.

Note

This product contains sodium azide: a POISONOUS AND HAZARDOUS SUBSTANCE which should be handled by trained staff only.

Applications

- Immunohistochemistry (Formalin/PFA-fixed paraffin-embedded sections)

Immunohistochemical staining of human testis with CHCHD4 polyclonal antibody (Cat # PAB22814) shows strong cytoplasmic positivity in cells in seminiferous ducts at 1:500-1:1000 dilution.

Gene Info — CHCHD4

Entrez GeneID[131474](#)**Protein Accession#**[Q8N4Q1](#)**Gene Name**

CHCHD4

Gene Alias

FLJ31709, MIA40

Gene Description

coiled-coil-helix-coiled-coil-helix domain containing 4

Omim ID[611077](#)**Gene Ontology**[Hyperlink](#)**Gene Summary**

CHCHD4, a component of human mitochondria, belongs to a protein family whose members share 6 highly conserved cysteine residues constituting a -CXC-CX(9)C-CX(9)C- motif in the C terminus (Hofmann et al., 2005 [PubMed 16185709]).[supplied by OMIM]

Other Designations

-