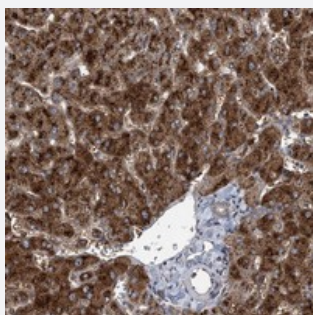


# SPOPL polyclonal antibody

Catalog # PAB22813      Size 100 uL

## Applications



### Immunohistochemistry (Formalin/PFA-fixed paraffin-embedded sections)

Immunohistochemical staining of human liver with SPOPL polyclonal antibody (Cat # PAB22813) shows strong cytoplasmic positivity in hepatocytes.

## Specification

Product Description	Rabbit polyclonal antibody raised against recombinant SPOPL.
Immunogen	Recombinant protein corresponding to amino acids of human SPOPL.
Sequence	LHSAEQLKAQAIDFINRCSVLRQLGCKDGKNWNSNQATDIMETSGWKSMIQSHPHLVA
Host	Rabbit
Reactivity	Human
Form	Liquid
Purification	Antigen affinity purification
Isotype	IgG
Recommend Usage	Immunohistochemistry (1:20-1:50) The optimal working dilution should be determined by the end user.
Storage Buffer	In PBS, pH 7.2 (40% glycerol, 0.02% sodium azide)
Storage Instruction	Store at 4°C. For long term storage store at -20°C. Aliquot to avoid repeated freezing and thawing.

**Note**

This product contains sodium azide: a POISONOUS AND HAZARDOUS SUBSTANCE which should be handled by trained staff only.

## Applications

- Immunohistochemistry (Formalin/PFA-fixed paraffin-embedded sections)

Immunohistochemical staining of human liver with SPOPL polyclonal antibody (Cat # PAB22813) shows strong cytoplasmic positivity in hepatocytes.

## Gene Info — SPOPL

Entrez GeneID	<a href="#">339745</a>
Protein Accession#	<a href="#">Q6IQ16</a>
Gene Name	SPOPL
Gene Alias	FLJ53775
Gene Description	speckle-type POZ protein-like
Gene Ontology	<a href="#">Hyperlink</a>
Other Designations	HIB homolog 2 roadkill homolog 2