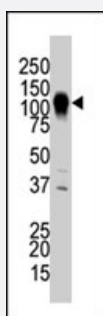


MAP3K6 polyclonal antibody

Catalog # PAB2281

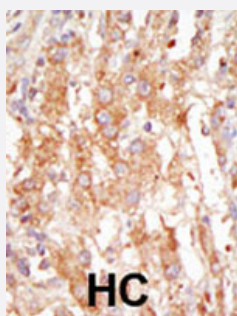
Size 400 uL

Applications



Western Blot (Cell lysate)

The MAP3K6 polyclonal antibody (Cat # PAB2281) is used in Western blot to detect MAP3K6 in NIH/3T3 cell lysate.



Immunohistochemistry (Formalin/PFA-fixed paraffin-embedded sections)

Formalin-fixed and paraffin-embedded human hepatocellular carcinoma tissue reacted with the MAP3K6 polyclonal antibody (Cat # PAB2281), which was peroxidase-conjugated to the secondary antibody, followed by DAB staining. This data demonstrates the use of this antibody for immunohistochemistry; clinical relevance has not been evaluated. HC = hepatocarcinoma.

Specification

Product Description	Rabbit polyclonal antibody raised against synthetic peptide of MAP3K6.
Immunogen	A synthetic peptide (conjugated with KLH) corresponding to C-terminus of human MAP3K6.
Host	Rabbit
Reactivity	Human, Mouse
Form	Liquid
Purification	Protein G purification

Recommend Usage	Western Blot (1:1000) Immunohistochemistry (1:50-100) The optimal working dilution should be determined by the end user.
Storage Buffer	In PBS (0.09% sodium azide)
Storage Instruction	Store at 4°C. For long term storage store at -20°C. Aliquot to avoid repeated freezing and thawing.
Note	This product contains sodium azide: a POISONOUS AND HAZARDOUS SUBSTANCE which should be handled by trained staff only.

Applications

- Western Blot (Cell lysate)

The MAP3K6 polyclonal antibody (Cat # PAB2281) is used in Western blot to detect MAP3K6 in NIH/3T3 cell lysate.

- Immunohistochemistry (Formalin/PFA-fixed paraffin-embedded sections)

Formalin-fixed and paraffin-embedded human hepatocellular carcinoma tissue reacted with the MAP3K6 polyclonal antibody (Cat # PAB2281), which was peroxidase-conjugated to the secondary antibody, followed by DAB staining. This data demonstrates the use of this antibody for immunohistochemistry; clinical relevance has not been evaluated. HC = hepatocarcinoma.

Gene Info — MAP3K6

Entrez GeneID	9064
Protein Accession#	O95382
Gene Name	MAP3K6
Gene Alias	ASK2, MAPKKK6, MGC125653, MGC20114
Gene Description	mitogen-activated protein kinase kinase kinase 6
Omim ID	604468
Gene Ontology	Hyperlink
Gene Summary	This gene encodes a member of the serine/threonine protein kinase family. The encoded kinase was identified by its interaction with MAP3K5/ASK, a protein kinase and an activator of c-Jun kinase (MAPK7/JNK) and MAPK14/p38 kinase. This kinase was found to weakly activate MAPK7, but not MAPK1/ERK or MAPK14. An alternatively spliced transcript variant has been found for this gene, but its biological validity has not been determined. [provided by RefSeq]
Other Designations	OTTHUMP00000005063 apoptosis signal-regulating kinase 2

Publication Reference

- [MAPKKK6, a novel mitogen-activated protein kinase kinase kinase, that associates with MAPKKK5.](#)

Wang XS, Diener K, Tan TH, Yao Z.

Biochemical and Biophysical Research Communications 1998 Dec; 253(1):33.

Pathway

- [MAPK signaling pathway](#)

Disease

- [Cardiovascular Diseases](#)
- [Diabetes Mellitus](#)
- [Edema](#)
- [Huntington disease](#)
- [Kidney Failure](#)