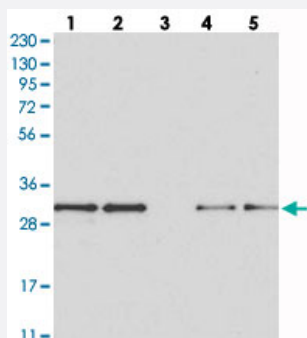


MAPK1IP1L polyclonal antibody

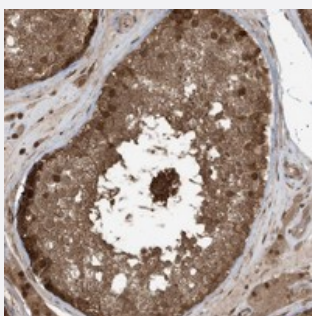
Catalog # PAB22804 Size 100 uL

Applications



Western Blot

Western blot analysis of Lane 1: RT-4, Lane 2: U-251 MG, Lane 3: Human Plasma, Lane 4: Liver, Lane 5: Tonsil with MAPK1IP1L polyclonal antibody (Cat # PAB22804) at 1:250-1:500 dilution.



Immunohistochemistry (Formalin/PFA-fixed paraffin-embedded sections)

Immunohistochemical staining of human testis with MAPK1IP1L polyclonal antibody (Cat # PAB22804) shows strong cytoplasmic and nuclear positivity in cells in seminiferous ducts at 1:200-1:500 dilution.

Specification

Product Description	Rabbit polyclonal antibody raised against recombinant MAPK1IP1L.
Immunogen	Recombinant protein corresponding to amino acids of human MAPK1IP1L.
Sequence	APPVPWGTVPFGAWGPPAPYPAPTGSYPTGLYPTSPNPFQVPSGSPGAPPMPGG
Host	Rabbit
Reactivity	Human
Form	Liquid
Purification	Antigen affinity purification

Isotype	IgG
Recommend Usage	Immunohistochemistry (1:200-1:500) Western Blot (1:250-1:500) The optimal working dilution should be determined by the end user.
Storage Buffer	In PBS, pH 7.2 (40% glycerol, 0.02% sodium azide)
Storage Instruction	Store at 4°C. For long term storage store at -20°C. Aliquot to avoid repeated freezing and thawing.
Note	This product contains sodium azide: a POISONOUS AND HAZARDOUS SUBSTANCE which should be handled by trained staff only.

Applications

- Western Blot

Western blot analysis of Lane 1: RT-4, Lane 2: U-251 MG, Lane 3: Human Plasma, Lane 4: Liver, Lane 5: Tonsil with MAPK1IP1L polyclonal antibody (Cat # PAB22804) at 1:250-1:500 dilution.

- Immunohistochemistry (Formalin/PFA-fixed paraffin-embedded sections)

Immunohistochemical staining of human testis with MAPK1IP1L polyclonal antibody (Cat # PAB22804) shows strong cytoplasmic and nuclear positivity in cells in seminiferous ducts at 1:200-1:500 dilution.

Gene Info — MAPK1IP1L

Entrez GeneID	93487
Protein Accession#	Q8NDC0
Gene Name	MAPK1IP1L
Gene Alias	C14orf32, MGC23138, MISS, c14_5346
Gene Description	mitogen-activated protein kinase 1 interacting protein 1-like
Gene Ontology	Hyperlink
Other Designations	MAPK-interacting and spindle-stabilizing protein mitogen activated protein kinase 1 interacting protein 1-like