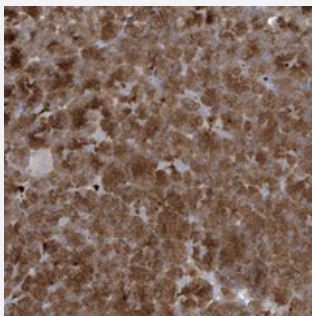


# NAV3 polyclonal antibody

Catalog # PAB22799      Size 100 uL

## Applications



### Immunohistochemistry (Formalin/PFA-fixed paraffin-embedded sections)

Immunohistochemical staining of human pancreas with NAV3 polyclonal antibody (Cat # PAB22799) shows strong positivity in exocrine glandular cells at 1:50-1:200 dilution.

## Specification

Product Description	Rabbit polyclonal antibody raised against recombinant NAV3.
Immunogen	Recombinant protein corresponding to amino acids of human NAV3.
Sequence	PSQSLSKPITMEKASASSCPAPLEGREAGQASPSGSCMTVAQSSGQSTGNGAVQLPQQQHS HPNTATVAPFIYRAHSENEGTLPSADS
Host	Rabbit
Reactivity	Human
Form	Liquid
Purification	Antigen affinity purification
Isotype	IgG
Recommend Usage	Immunohistochemistry (1:50-1:200) The optimal working dilution should be determined by the end user.
Storage Buffer	In PBS, pH 7.2 (40% glycerol, 0.02% sodium azide)

**Storage Instruction**

Store at 4°C. For long term storage store at -20°C.  
Aliquot to avoid repeated freezing and thawing.

**Note**

This product contains sodium azide: a POISONOUS AND HAZARDOUS SUBSTANCE which should be handled by trained staff only.

## Applications

- Immunohistochemistry (Formalin/PFA-fixed paraffin-embedded sections)

Immunohistochemical staining of human pancreas with NAV3 polyclonal antibody (Cat # PAB22799) shows strong positivity in exocrine glandular cells at 1:50-1:200 dilution.

## Gene Info — NAV3

**Entrez GeneID**[89795](#)**Protein Accession#**[Q8IVL0](#)**Gene Name**

NAV3

**Gene Alias**

KIAA0938, POMFIL1, STEERIN3, unc53H3

**Gene Description**

neuron navigator 3

**Omim ID**[611629](#)**Gene Ontology**[Hyperlink](#)**Gene Summary**

This gene belongs to the neuron navigator family and is expressed predominantly in the nervous system. The encoded protein contains coiled-coil domains and a conserved AAA domain characteristic for ATPases associated with a variety of cellular activities. This gene is similar to unc-53, a *Caenorhabditis elegans* gene involved in axon guidance. Multiple alternatively spliced transcript variants for this gene have been described but only one has had its full-length nature determined. [provided by RefSeq]

**Other Designations**

pore membrane and/or filament interacting like protein 1|steerin 3

## Disease

- [Cardiovascular Diseases](#)
- [Diabetes Mellitus](#)
- [Edema](#)

- [Tobacco Use Disorder](#)