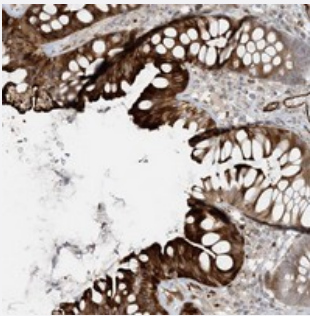


# BCORL1 polyclonal antibody

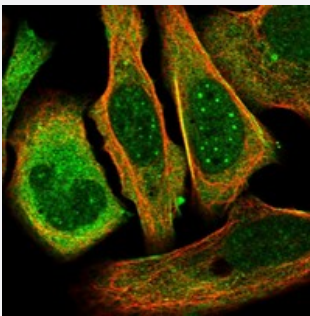
Catalog # PAB22786      Size 100 uL

## Applications



### Immunohistochemistry (Formalin/PFA-fixed paraffin-embedded sections)

Immunohistochemical staining of human colon with BCORL1 polyclonal antibody (Cat # PAB22786) shows strong cytoplasmic and membranous positivity in glandular cells.



### Immunofluorescence

Immunofluorescent staining of human cell line U-2 OS with BCORL1 polyclonal antibody (Cat # PAB22786) at 1-4 ug/mL dilution shows positivity in nucleus but not nucleoli, plasma membrane and cytoplasm.

## Specification

Product Description	Rabbit polyclonal antibody raised against recombinant BCORL1.
Immunogen	Recombinant protein corresponding to amino acids of human BCORL1.
Sequence	TSSDRIRMCGINEERRAPLSDEESTTGDCQHFGSQEFCVSSSFVKVELTAVGSGSNARGADPDG SATEKLGHKSEDKPDDPQPK
Host	Rabbit
Reactivity	Human
Form	Liquid

Purification	Antigen affinity purification
Isotype	IgG
Recommend Usage	Immunohistochemistry (1:20-1:50) Immunofluorescence (1-4 ug/mL) The optimal working dilution should be determined by the end user.
Storage Buffer	In PBS, pH 7.2 (40% glycerol, 0.02% sodium azide)
Storage Instruction	Store at 4°C. For long term storage store at -20°C. Aliquot to avoid repeated freezing and thawing.
Note	This product contains sodium azide: a POISONOUS AND HAZARDOUS SUBSTANCE which should be handled by trained staff only.

## Applications

- Immunohistochemistry (Formalin/PFA-fixed paraffin-embedded sections)

Immunohistochemical staining of human colon with BCORL1 polyclonal antibody (Cat # PAB22786) shows strong cytoplasmic and membranous positivity in glandular cells.

- Immunofluorescence

Immunofluorescent staining of human cell line U-2 OS with BCORL1 polyclonal antibody (Cat # PAB22786) at 1-4 ug/mL dilution shows positivity in nucleus but not nucleoli, plasma membrane and cytoplasm.

## Gene Info — BCORL1

Entrez GeneID	<a href="#">63035</a>
Protein Accession#	<a href="#">Q5H9F3</a>
Gene Name	BCORL1
Gene Alias	B930011H20Rik, CXorf10, FLJ11362, FLJ11632
Gene Description	BCL6 co-repressor-like 1
Gene Ontology	<a href="#">Hyperlink</a>
Other Designations	OTTHUMP00000062558