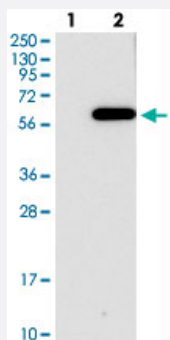


C2orf30 polyclonal antibody

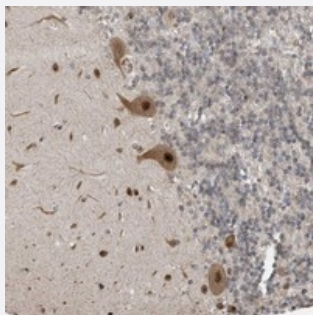
Catalog # PAB22781 Size 100 uL

Applications



Western Blot (Transfected lysate)

Western blot analysis of Lane 1: Negative control (vector only transfected HEK293T lysate), Lane 2: Over-expression Lysate (Co-expressed with a C-terminal myc-DDK tag (~3.1 kDa) in mammalian HEK293T cells) with C2orf30 polyclonal antibody (Cat # PAB22781).



Immunohistochemistry (Formalin/PFA-fixed paraffin-embedded sections)

Immunohistochemical staining of human cerebellum with C2orf30 polyclonal antibody (Cat # PAB22781) shows strong nuclear/nucleolar and cytoplasmic positivity in Purkinje cells.

Specification

Product Description	Rabbit polyclonal antibody raised against recombinant C2orf30.
Immunogen	Recombinant protein corresponding to amino acids of human C2orf30.
Sequence	SDDIPFRVNWPGTEFSLPTTGVLTKEDNYVIMTTAHKEKYKCILPLVTSGDEEEEEKDYKGPNPREL LEPLFKQSSCSYRIESYWTYEVCHGKH
Host	Rabbit
Reactivity	Human
Form	Liquid

Purification	Antigen affinity purification
Isotype	IgG
Recommend Usage	Immunohistochemistry (1:50-1:200) Western Blot (1:250-1:500) The optimal working dilution should be determined by the end user.
Storage Buffer	In PBS, pH 7.2 (40% glycerol, 0.02% sodium azide)
Storage Instruction	Store at 4°C. For long term storage store at -20°C. Aliquot to avoid repeated freezing and thawing.
Note	This product contains sodium azide: a POISONOUS AND HAZARDOUS SUBSTANCE which should be handled by trained staff only.

Applications

- Western Blot (Transfected lysate)

Western blot analysis of Lane 1: Negative control (vector only transfected HEK293T lysate), Lane 2: Over-expression Lysate (Co-expressed with a C-terminal myc-DDK tag (~3.1 kDa) in mammalian HEK293T cells) with C2orf30 polyclonal antibody (Cat # PAB22781).

- Immunohistochemistry (Formalin/PFA-fixed paraffin-embedded sections)

Immunohistochemical staining of human cerebellum with C2orf30 polyclonal antibody (Cat # PAB22781) shows strong nuclear/nucleolar and cytoplasmic positivity in Purkinje cells.

Gene Info — C2orf30

Entrez GeneID	27248
Protein Accession#	Q96DZ1
Gene Name	C2orf30
Gene Alias	CL24936, CL25084, ERLECTIN, XTP3-B, XTP3TPB
Gene Description	chromosome 2 open reading frame 30
Omim ID	611229
Gene Ontology	Hyperlink
Other Designations	XTP3-transactivated protein B