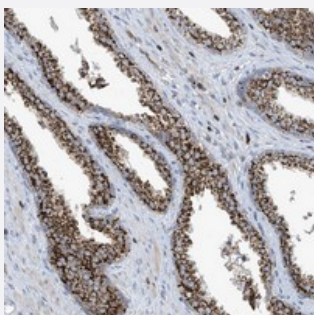


IBA57 polyclonal antibody

Catalog # PAB22757 Size 100 uL

Applications



Immunohistochemistry (Formalin/PFA-fixed paraffin-embedded sections)

Immunohistochemical staining of human prostate with IBA57 polyclonal antibody (Cat # PAB22757) strong cytoplasmic positivity in glandular cells.

Specification

Product Description	Rabbit polyclonal antibody raised against recombinant IBA57.
Immunogen	Recombinant protein corresponding to amino acids of human IBA57.
Sequence	WRLLTQDEGPALVPGGRLGDLWDYHQHRYLQGVPEGVRDLPPGVALPLESNLAFMNGVSFTKG CYIGQELTARTHMGVIRKRL
Host	Rabbit
Reactivity	Human
Form	Liquid
Purification	Antigen affinity purification
Isotype	IgG
Recommend Usage	Immunohistochemistry (1:20-1:50) The optimal working dilution should be determined by the end user.
Storage Buffer	In PBS, pH 7.2 (40% glycerol, 0.02% sodium azide)

Storage Instruction

Store at 4°C. For long term storage store at -20°C.
Aliquot to avoid repeated freezing and thawing.

Note

This product contains sodium azide: a POISONOUS AND HAZARDOUS SUBSTANCE which should be handled by trained staff only.

Applications

- Immunohistochemistry (Formalin/PFA-fixed paraffin-embedded sections)

Immunohistochemical staining of human prostate with IBA57 polyclonal antibody (Cat # PAB22757) strong cytoplasmic positivity in glandular cells.

Gene Info — IBA57

Entrez GeneID[200205](#)**Protein Accession#**[Q5T440](#)**Gene Name**

IBA57

Gene Alias

RP11-520H14.5, C1orf69

Gene Description

IBA57, iron-sulfur cluster assembly homolog (S. cerevisiae)

Gene Ontology[Hyperlink](#)**Gene Summary**

iron-sulfur cluster assembly factor for biotin synthase- and aconitase-like mitochondrial proteins

Other Designations

iron-sulfur cluster assembly factor for biotin synthase- and aconitase-like mitochondrial proteins, with a mass of 57kDa; iron-sulfur cluster assembly factor homolog; putative transferase C1orf69, mitochondrial; putative transferase CAF17, mitochondrial