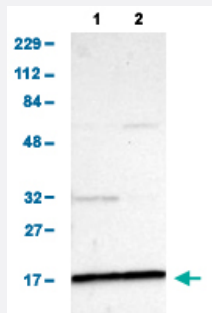


ZNF226 polyclonal antibody

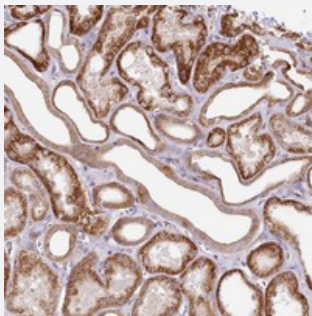
Catalog # PAB22731 Size 100 uL

Applications



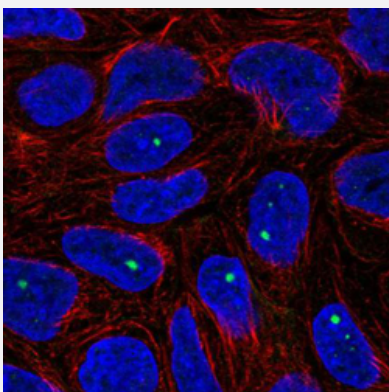
Western Blot (Cell lysate)

Western blot analysis of Lane 1: RT-4, Lane 2: U-251 MG sp.



Immunohistochemistry (Formalin/PFA-fixed paraffin-embedded sections)

Immunohistochemical staining of human kidney shows strong cytoplasmic positivity in renal tubules.



Immunofluorescence

Immunofluorescent staining of human cell line RT-4 shows localization to nuclear bodies.

Specification

Product Description

Rabbit polyclonal antibody raised against recombinant ZNF226.

Immunogen	Recombinant protein corresponding to amino acids of human ZNF226.
Sequence	LYRDVMVENFRNLLSVGHPPFKQDVSPIERNEQLWIMTTATRRQGNLGEKNQSKLITVQDRESEE ELSCWQIWQQIANDLTRCQDSMINNSQCHKQGDFPYQVGTLSIQISEDENYVKNADGPNNT
Host	Rabbit
Reactivity	Human
Form	Liquid
Purification	Antigen affinity purification
Isotype	IgG
Recommend Usage	Immunofluorescence (0.25-2 ug/mL) Immunohistochemistry (1:500-1:1000) Western Blot (0.04-0.4 ug/mL) The optimal working dilution should be determined by the end user.
Storage Buffer	In PBS, pH 7.2 (40% glycerol, 0.02% sodium azide).
Storage Instruction	Store at 4°C. For long term storage store at -20°C. Aliquot to avoid repeated freezing and thawing.
Note	This product contains sodium azide: a POISONOUS AND HAZARDOUS SUBSTANCE which should be handled by trained staff only.

Applications

- Western Blot (Cell lysate)

Western blot analysis of Lane 1: RT-4, Lane 2: U-251 MG sp.

- Immunohistochemistry (Formalin/PFA-fixed paraffin-embedded sections)

Immunohistochemical staining of human kidney shows strong cytoplasmic positivity in renal tubules.

- Immunofluorescence

Immunofluorescent staining of human cell line RT-4 shows localization to nuclear bodies.

Gene Info — ZNF226

Entrez GeneID [7769](#)

Protein Accession# [Q9NYT6](#)

Gene Name	ZNF226
Gene Alias	-
Gene Description	zinc finger protein 226
Gene Ontology	Hyperlink
Other Designations	Kruppel-associated box protein