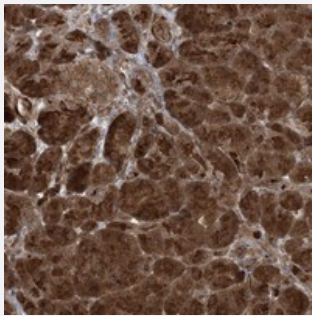


CCDC39 polyclonal antibody

Catalog # PAB22725 Size 100 uL

Applications



Immunohistochemistry (Formalin/PFA-fixed paraffin-embedded sections)

Immunohistochemical staining of human pancreas with CCDC39 polyclonal antibody (Cat # PAB22725) shows strong cytoplasmic positivity in exocrine glandular cells.

Specification

Product Description	Rabbit polyclonal antibody raised against recombinant CCDC39.
Immunogen	Recombinant protein corresponding to amino acids of human CCDC39.
Sequence	ILDNELTETISAQLELDKAAQDFRKIHNERQELIKQWENTIEQMQRDGDIDNCALELARIKQETREKENLVKEKIKFLESEIGNNTEFEKRISVADR
Host	Rabbit
Reactivity	Human
Form	Liquid
Purification	Antigen affinity purification
Isotype	IgG
Recommend Usage	Immunohistochemistry (1:200-1:500) The optimal working dilution should be determined by the end user.
Storage Buffer	In PBS, pH 7.2 (40% glycerol, 0.02% sodium azide)

Storage Instruction

Store at 4°C. For long term storage store at -20°C.
Aliquot to avoid repeated freezing and thawing.

Note

This product contains sodium azide: a POISONOUS AND HAZARDOUS SUBSTANCE which should be handled by trained staff only.

Applications

- Immunohistochemistry (Formalin/PFA-fixed paraffin-embedded sections)

Immunohistochemical staining of human pancreas with CCDC39 polyclonal antibody (Cat # PAB22725) shows strong cytoplasmic positivity in exocrine glandular cells.

Gene Info — CCDC39

Entrez GeneID[339829](#)**Protein Accession#**[Q9UFE4](#)**Gene Name**

CCDC39

Gene Alias

DKFZp434A128

Gene Description

coiled-coil domain containing 39

Gene Ontology[Hyperlink](#)**Other Designations**

-

Disease

- [Tobacco Use Disorder](#)