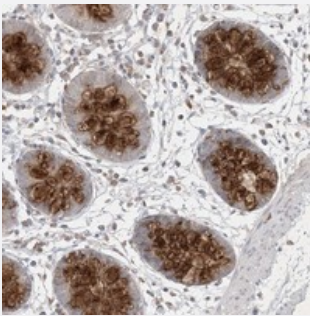


PRSS36 polyclonal antibody

Catalog # PAB22704 Size 100 uL

Applications



Immunohistochemistry (Formalin/PFA-fixed paraffin-embedded sections)

Immunohistochemical staining of human colon with PRSS36 polyclonal antibody (Cat # PAB22704) strong cytoplasmic positivity in glandular cells.

Specification

Product Description	Rabbit polyclonal antibody raised against recombinant PRSS36.
Immunogen	Recombinant protein corresponding to amino acids of human PRSS36.
Sequence	WVLGWKEPQDRVPVAAAVSILTQRICDCLYQGILPPGTLCVLYAEGQENRCEMTSAPPLLCQMTE GSWIPVGMVQGSRELFAAIG
Host	Rabbit
Reactivity	Human
Form	Liquid
Purification	Antigen affinity purification
Isotype	IgG
Recommend Usage	Immunohistochemistry (1:10-1:20) The optimal working dilution should be determined by the end user.
Storage Buffer	In PBS, pH 7.2 (40% glycerol, 0.02% sodium azide)

Storage Instruction

Store at 4°C. For long term storage store at -20°C.
Aliquot to avoid repeated freezing and thawing.

Note

This product contains sodium azide: a POISONOUS AND HAZARDOUS SUBSTANCE which should be handled by trained staff only.

Applications

- Immunohistochemistry (Formalin/PFA-fixed paraffin-embedded sections)

Immunohistochemical staining of human colon with PRSS36 polyclonal antibody (Cat # PAB22704) strong cytoplasmic positivity in glandular cells.

Gene Info — PRSS36

Entrez GeneID[146547](#)**Protein Accession#**[Q5K4E3](#)**Gene Name**

PRSS36

Gene Alias

FLJ90661

Gene Description

protease, serine, 36

Omim ID[610560](#)**Gene Ontology**[Hyperlink](#)**Gene Summary**

serine

Other Designations

polyserase-2|polyserine protease-2