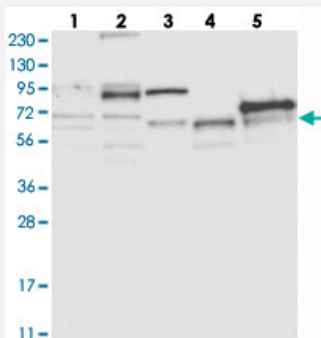


ABLIM2 polyclonal antibody

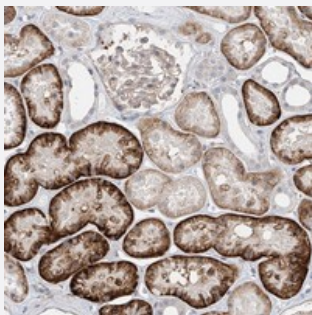
Catalog # PAB22698 Size 100 uL

Applications



Western Blot

Western blot analysis of Lane 1: RT-4, Lane 2: U-251 MG, Lane 3: Human Plasma, Lane 4: Liver, Lane 5: Tonsil with ABLIM2 polyclonal antibody (Cat # PAB22698).



Immunohistochemistry (Formalin/PFA-fixed paraffin-embedded sections)

Immunohistochemical staining of human kidney with ABLIM2 polyclonal antibody (Cat # PAB22698) shows strong cytoplasmic positivity in cells of tubules.

Specification

Product Description	Rabbit polyclonal antibody raised against recombinant ABLIM2.
Immunogen	Recombinant protein corresponding to amino acids of human ABLIM2.
Sequence	DGEDGSLDQDNRRKSSWLMLKGADTRTNSPDLDTQSLSHSSGTD RDPLQRMAGDSFHSRFP YSKSDPLPGHGKNGLDQRNANLAPCGADPDAS
Host	Rabbit
Reactivity	Human
Form	Liquid

Purification	Antigen affinity purification
Isotype	IgG
Recommend Usage	Immunohistochemistry (1:200-1:500) Western Blot (1:250-1:500) The optimal working dilution should be determined by the end user.
Storage Buffer	In PBS, pH 7.2 (40% glycerol, 0.02% sodium azide)
Storage Instruction	Store at 4°C. For long term storage store at -20°C. Aliquot to avoid repeated freezing and thawing.
Note	This product contains sodium azide: a POISONOUS AND HAZARDOUS SUBSTANCE which should be handled by trained staff only.

Applications

- Western Blot

Western blot analysis of Lane 1: RT-4, Lane 2: U-251 MG, Lane 3: Human Plasma, Lane 4: Liver, Lane 5: Tonsil with ABLIM2 polyclonal antibody (Cat # PAB22698).

- Immunohistochemistry (Formalin/PFA-fixed paraffin-embedded sections)

Immunohistochemical staining of human kidney with ABLIM2 polyclonal antibody (Cat # PAB22698) shows strong cytoplasmic positivity in cells of tubules.

Gene Info — ABLIM2

Entrez GeneID	84448
Protein Accession#	Q6H8Q1
Gene Name	ABLIM2
Gene Alias	DKFZp761F129, FLJ26534, FLJ39684, KIAA1808, MGC141918
Gene Description	actin binding LIM protein family, member 2
Gene Ontology	Hyperlink
Gene Summary	O
Other Designations	actin binding LIM protein 2 actin-binding LIM protein 2

Pathway

- [Axon guidance](#)

Disease

- [Tobacco Use Disorder](#)