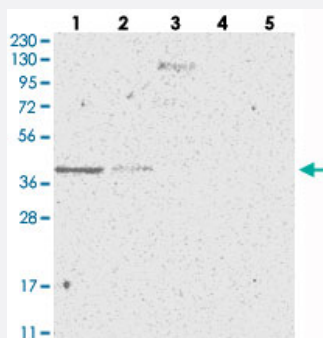


SLC35A5 polyclonal antibody

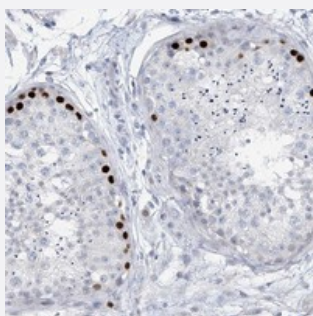
Catalog # PAB22687 Size 100 uL

Applications



Western Blot

Western blot analysis of Lane 1: RT-4, Lane 2: U-251 MG, Lane 3: Human Plasma, Lane 4: Liver, Lane 5: Tonsil with SLC35A5 polyclonal antibody (Cat # PAB22687).



Immunohistochemistry (Formalin/PFA-fixed paraffin-embedded sections)

Immunohistochemical staining of human testis with SLC35A5 polyclonal antibody (Cat # PAB22687) shows strong nuclear positivity in a subset of spermatogonia.

Specification

Product Description	Rabbit polyclonal antibody raised against recombinant SLC35A5.
Immunogen	Recombinant protein corresponding to amino acids of human SLC35A5.
Sequence	TLQHNLAGRGFHHDAFFSPSNSCLLFRSECPRKDNCTAKEWTFPEAKWNTTARV
Host	Rabbit
Reactivity	Human
Form	Liquid
Purification	Antigen affinity purification

Isotype	IgG
Recommend Usage	Immunohistochemistry (1:50-1:200) Western Blot (1:250-1:500) The optimal working dilution should be determined by the end user.
Storage Buffer	In PBS, pH 7.2 (40% glycerol, 0.02% sodium azide)
Storage Instruction	Store at 4°C. For long term storage store at -20°C. Aliquot to avoid repeated freezing and thawing.
Note	This product contains sodium azide: a POISONOUS AND HAZARDOUS SUBSTANCE which should be handled by trained staff only.

Applications

- Western Blot

Western blot analysis of Lane 1: RT-4, Lane 2: U-251 MG, Lane 3: Human Plasma, Lane 4: Liver, Lane 5: Tonsil with SLC35A5 polyclonal antibody (Cat # PAB22687).

- Immunohistochemistry (Formalin/PFA-fixed paraffin-embedded sections)

Immunohistochemical staining of human testis with SLC35A5 polyclonal antibody (Cat # PAB22687) shows strong nuclear positivity in a subset of spermatogonia.

Gene Info — SLC35A5

Entrez GeneID	55032
Protein Accession#	Q9BS91
Gene Name	SLC35A5
Gene Alias	DKFZp434E102, FLJ11130, FLJ20730, FLJ25973
Gene Description	solute carrier family 35, member A5
Gene Ontology	Hyperlink
Gene Summary	O
Other Designations	-