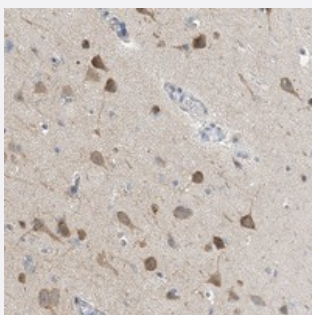


# CCDC14 polyclonal antibody

Catalog # PAB22673      Size 100 uL

## Applications



### Immunohistochemistry (Formalin/PFA-fixed paraffin-embedded sections)

Immunohistochemical staining of human cerebral cortex with CCDC14 polyclonal antibody (Cat # PAB22673) shows moderate cytoplasmic positivity in neuronal cells.

## Specification

Product Description	Rabbit polyclonal antibody raised against recombinant CCDC14.
Immunogen	Recombinant protein corresponding to amino acids of human CCDC14.
Sequence	IYYQALCEHVQTQMMLMNDLTSKNIPNGIPAVPCHAPSHSESQATPHSSYGLCTSTPVWSLQRPPC PPKVHSEVQTDGNSQFASQG
Host	Rabbit
Reactivity	Human
Form	Liquid
Purification	Antigen affinity purification
Isotype	IgG
Recommend Usage	Immunohistochemistry (1:1000-1:2500) The optimal working dilution should be determined by the end user.
Storage Buffer	In PBS, pH 7.2 (40% glycerol, 0.02% sodium azide)

**Storage Instruction**

Store at 4°C. For long term storage store at -20°C.  
Aliquot to avoid repeated freezing and thawing.

**Note**

This product contains sodium azide: a POISONOUS AND HAZARDOUS SUBSTANCE which should be handled by trained staff only.

## Applications

- Immunohistochemistry (Formalin/PFA-fixed paraffin-embedded sections)

Immunohistochemical staining of human cerebral cortex with CCDC14 polyclonal antibody (Cat # PAB22673) shows moderate cytoplasmic positivity in neuronal cells.

## Gene Info — CCDC14

**Entrez GeneID**[64770](#)**Protein Accession#**[Q49A88](#)**Gene Name**

CCDC14

**Gene Alias**

DKFZp434L1050, FLJ12892, FLJ41065

**Gene Description**

coiled-coil domain containing 14

**Gene Ontology**[Hyperlink](#)**Other Designations**

-