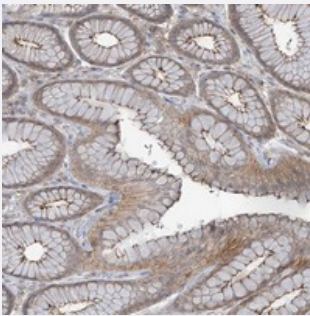


# SLC9A2 polyclonal antibody

Catalog # PAB22662      Size 100 uL

## Applications



### Immunohistochemistry (Formalin/PFA-fixed paraffin-embedded sections)

Immunohistochemical staining of human stomach with SLC9A2 polyclonal antibody (Cat # PAB22662) shows moderate luminal membrane and cytoplasmic positivity in glandular cells at 1:50-1:200 dilution.

## Specification

<b>Product Description</b>	Rabbit polyclonal antibody raised against recombinant SLC9A2.
<b>Immunogen</b>	Recombinant protein corresponding to amino acids of human SLC9A2.
<b>Sequence</b>	LEIKHAIEMAETGMISTVPTFASLNDCCREEKIRKVTSSSETDEIRELLSRNLYQIR
<b>Host</b>	Rabbit
<b>Reactivity</b>	Human
<b>Form</b>	Liquid
<b>Purification</b>	Antigen affinity purification
<b>Isotype</b>	IgG
<b>Recommend Usage</b>	Immunohistochemistry (1:50-1:200) The optimal working dilution should be determined by the end user.
<b>Storage Buffer</b>	In PBS, pH 7.2 (40% glycerol, 0.02% sodium azide)
<b>Storage Instruction</b>	Store at 4°C. For long term storage store at -20°C. Aliquot to avoid repeated freezing and thawing.

**Note**

This product contains sodium azide: a POISONOUS AND HAZARDOUS SUBSTANCE which should be handled by trained staff only.

## Applications

- Immunohistochemistry (Formalin/PFA-fixed paraffin-embedded sections)

Immunohistochemical staining of human stomach with SLC9A2 polyclonal antibody (Cat # PAB22662) shows moderate luminal membrane and cytoplasmic positivity in glandular cells at 1:50-1:200 dilution.

## Gene Info — SLC9A2

**Entrez GeneID** [6549](#)

**Protein Accession#** [Q9UBY0](#)

**Gene Name** SLC9A2

**Gene Alias** NHE2

**Gene Description** solute carrier family 9 (sodium/hydrogen exchanger), member 2

**Omim ID** [600530](#)

**Gene Ontology** [Hyperlink](#)

**Gene Summary** O

**Other Designations** solute carrier family 9 (sodium/hydrogen exchanger), isoform 2

## Disease

- [Hypertension](#)
- [Tobacco Use Disorder](#)