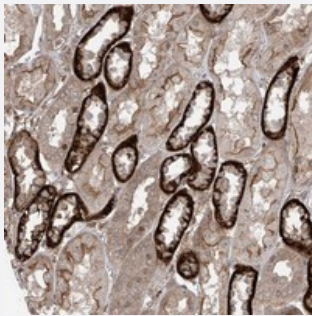


C14orf166B polyclonal antibody

Catalog # PAB22659 Size 100 uL

Applications



Immunohistochemistry (Formalin/PFA-fixed paraffin-embedded sections)

Immunohistochemical staining of human kidney with C14orf166B polyclonal antibody (Cat # PAB22659) shows strong cytoplasmic and membranous positivity in subsets of tubules at 1:50-1:200 dilution.

Specification

| | |
|----------------------------|---|
| Product Description | Rabbit polyclonal antibody raised against recombinant C14orf166B. |
| Immunogen | Recombinant protein corresponding to amino acids of human C14orf166B. |
| Sequence | LLTNPMKLIQSYADQHKITVDFFKSLNPTGTMKMSVDEFQKVMIEQNKVPLNQYQVREVIKKLDEK TGMVNFSFLNTMK |
| Host | Rabbit |
| Reactivity | Human |
| Form | Liquid |
| Purification | Antigen affinity purification |
| Isotype | IgG |
| Recommend Usage | Immunohistochemistry (1:50-1:200) The optimal working dilution should be determined by the end user. |
| Storage Buffer | In PBS, pH 7.2 (40% glycerol, 0.02% sodium azide) |

Storage Instruction

Store at 4°C. For long term storage store at -20°C.
Aliquot to avoid repeated freezing and thawing.

Note

This product contains sodium azide: a POISONOUS AND HAZARDOUS SUBSTANCE which should be handled by trained staff only.

Applications

- Immunohistochemistry (Formalin/PFA-fixed paraffin-embedded sections)

Immunohistochemical staining of human kidney with C14orf166B polyclonal antibody (Cat # PAB22659) shows strong cytoplasmic and membranous positivity in subsets of tubules at 1:50-1:200 dilution.

Gene Info — C14orf166B

Entrez GeneID[145497](#)**Protein Accession#**[Q0VAA2](#)**Gene Name**

C14orf166B

Gene Alias

-

Gene Description

chromosome 14 open reading frame 166B

Gene Ontology[Hyperlink](#)**Other Designations**

hypothetical protein LOC145497

Disease

- [Tobacco Use Disorder](#)