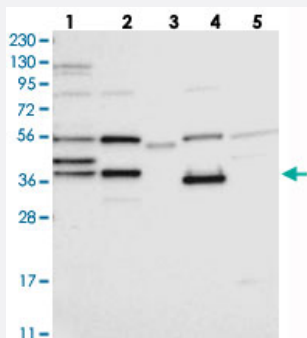


ZCWPW2 polyclonal antibody

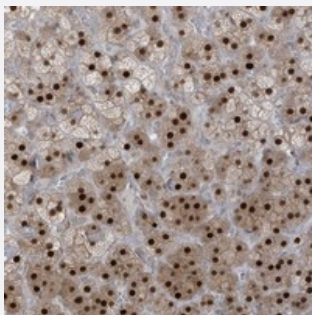
Catalog # PAB22654 Size 100 uL

Applications



Western Blot

Western blot analysis of Lane 1: RT-4, Lane 2: U-251 MG, Lane 3: Human Plasma, Lane 4: Liver, Lane 5: Tonsil with ZCWPW2 polyclonal antibody (Cat # PAB22654).



Immunohistochemistry (Formalin/PFA-fixed paraffin-embedded sections)

Immunohistochemical staining of human adrenal gland with ZCWPW2 polyclonal antibody (Cat # PAB22654) shows strong nuclear positivity in cortical cells.

Specification

Product Description	Rabbit polyclonal antibody raised against recombinant ZCWPW2.
Immunogen	Recombinant protein corresponding to amino acids of human ZCWPW2.
Sequence	TATPDESEEGHGEEINMGEKLSKCSPEAPAGSLFENHYEEDYLVIDGIKLKAGECIEDITNKFKEID ALMSEF
Host	Rabbit
Reactivity	Human
Form	Liquid

Purification	Antigen affinity purification
Isotype	IgG
Recommend Usage	Immunohistochemistry (1:500-1:1000) Western Blot (1:250-1:500) The optimal working dilution should be determined by the end user.
Storage Buffer	In PBS, pH 7.2 (40% glycerol, 0.02% sodium azide)
Storage Instruction	Store at 4°C. For long term storage store at -20°C. Aliquot to avoid repeated freezing and thawing.
Note	This product contains sodium azide: a POISONOUS AND HAZARDOUS SUBSTANCE which should be handled by trained staff only.

Applications

- Western Blot

Western blot analysis of Lane 1: RT-4, Lane 2: U-251 MG, Lane 3: Human Plasma, Lane 4: Liver, Lane 5: Tonsil with ZCWPW2 polyclonal antibody (Cat # PAB22654).

- Immunohistochemistry (Formalin/PFA-fixed paraffin-embedded sections)

Immunohistochemical staining of human adrenal gland with ZCWPW2 polyclonal antibody (Cat # PAB22654) shows strong nuclear positivity in cortical cells.

Gene Info — ZCWPW2

Entrez GeneID	152098
Protein Accession#	Q504Y3
Gene Name	ZCWPW2
Gene Alias	ZCW2
Gene Description	zinc finger, CW type with PWWP domain 2
Gene Ontology	Hyperlink
Gene Summary	O
Other Designations	-