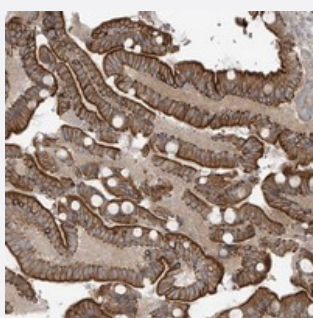


NAV3 polyclonal antibody

Catalog # PAB22610 Size 100 uL

Applications



Immunohistochemistry (Formalin/PFA-fixed paraffin-embedded sections)

Immunohistochemical staining of human duodenum with NAV3 polyclonal antibody (Cat # PAB22610) shows strong membranous and cytoplasmic positivity in glandular cells.

Specification

Product Description	Rabbit polyclonal antibody raised against recombinant NAV3.
Immunogen	Recombinant protein corresponding to amino acids of human NAV3.
Sequence	STDDLNTSSVSSYSNITVPSRKNTQLRTDSEKRSTTDETWDSPEELKKPEEDFDSHGDAGGKW KTVSSGLPEDPEKAGQKASLS
Host	Rabbit
Reactivity	Human
Form	Liquid
Purification	Antigen affinity purification
Isotype	IgG
Recommend Usage	Immunohistochemistry (1:200-1:500) The optimal working dilution should be determined by the end user.
Storage Buffer	In PBS, pH 7.2 (40% glycerol, 0.02% sodium azide)

Storage Instruction

Store at 4°C. For long term storage store at -20°C.
Aliquot to avoid repeated freezing and thawing.

Note

This product contains sodium azide: a POISONOUS AND HAZARDOUS SUBSTANCE which should be handled by trained staff only.

Applications

- Immunohistochemistry (Formalin/PFA-fixed paraffin-embedded sections)

Immunohistochemical staining of human duodenum with NAV3 polyclonal antibody (Cat # PAB22610) shows strong membranous and cytoplasmic positivity in glandular cells.

Gene Info — NAV3

Entrez GeneID

[89795](#)

Protein Accession#

[Q8IVL0](#)

Gene Name

NAV3

Gene Alias

KIAA0938, POMFIL1, STEERIN3, unc53H3

Gene Description

neuron navigator 3

Omim ID

[611629](#)

Gene Ontology

[Hyperlink](#)

Gene Summary

This gene belongs to the neuron navigator family and is expressed predominantly in the nervous system. The encoded protein contains coiled-coil domains and a conserved AAA domain characteristic for ATPases associated with a variety of cellular activities. This gene is similar to unc-53, a *Caenorhabditis elegans* gene involved in axon guidance. Multiple alternatively spliced transcript variants for this gene have been described but only one has had its full-length nature determined. [provided by RefSeq]

Other Designations

pore membrane and/or filament interacting like protein 1|steerin 3

Disease

- [Cardiovascular Diseases](#)
- [Diabetes Mellitus](#)
- [Edema](#)

- [Tobacco Use Disorder](#)