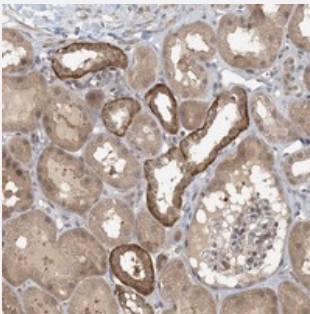


ZC3H12A polyclonal antibody

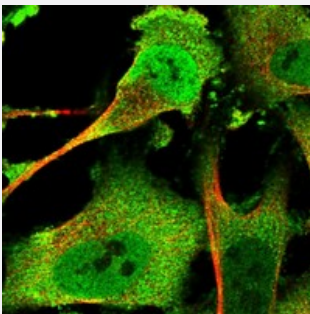
Catalog # PAB22605 Size 100 uL

Applications



Immunohistochemistry (Formalin/PFA-fixed paraffin-embedded sections)

Immunohistochemical staining of human kidney with ZC3H12A polyclonal antibody (Cat # PAB22605) shows strong cytoplasmic positivity in cells in tubules at 1:200-1:500 dilution.



Immunofluorescence

Immunofluorescent staining of human cell line U-251MG with ZC3H12A polyclonal antibody (Cat # PAB22605) at 1-4 ug/mL dilution shows positivity in nucleus but not nucleoli and cytoplasm.

Specification

Product Description	Rabbit polyclonal antibody raised against recombinant ZC3H12A.
Immunogen	Recombinant protein corresponding to amino acids of human ZC3H12A.
Sequence	AFPPREYWSEPYPLPPPTSVLQEPPVQSPGAGRSPWGRAGSLAKEQASVYTKLCGVFPPHLVE AVMGRFPQLLDPQQLAAEILSYKSQHPS
Host	Rabbit
Reactivity	Human
Form	Liquid

Purification	Antigen affinity purification
Isotype	IgG
Recommend Usage	Immunohistochemistry (1:200-1:500) Immunofluorescence (1-4 ug/mL) The optimal working dilution should be determined by the end user.
Storage Buffer	In PBS, pH 7.2 (40% glycerol, 0.02% sodium azide)
Storage Instruction	Store at 4°C. For long term storage store at -20°C. Aliquot to avoid repeated freezing and thawing.
Note	This product contains sodium azide: a POISONOUS AND HAZARDOUS SUBSTANCE which should be handled by trained staff only.

Applications

- Immunohistochemistry (Formalin/PFA-fixed paraffin-embedded sections)

Immunohistochemical staining of human kidney with ZC3H12A polyclonal antibody (Cat # PAB22605) shows strong cytoplasmic positivity in cells in tubules at 1:200-1:500 dilution.

- Immunofluorescence

Immunofluorescent staining of human cell line U-251MG with ZC3H12A polyclonal antibody (Cat # PAB22605) at 1-4 ug/mL dilution shows positivity in nucleus but not nucleoli and cytoplasm.

Gene Info — ZC3H12A

Entrez GeneID	80149
Protein Accession#	Q5D1E8
Gene Name	ZC3H12A
Gene Alias	FLJ23231, MCPIP, MCPIP1, RP3-423B22.1, dJ423B22.1
Gene Description	zinc finger CCCH-type containing 12A
Omim ID	610562
Gene Ontology	Hyperlink
Gene Summary	ZC3H12A is an MCP1 (CCL2; MIM 158105)-induced protein that acts as a transcriptional activator and causes cell death of cardiomyocytes, possibly via induction of genes associated with apoptosis.[supplied by OMIM]

Other Designations

MCP induced protein 1|MCP-1 treatment-induced protein|MCP-induced protein 1|OTTHUMP000004398|OTTHUMP00000004399
