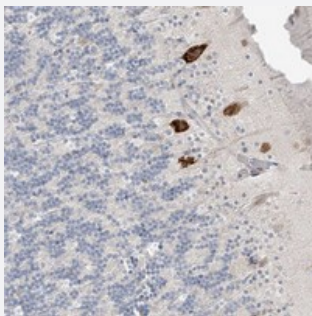


C2orf42 polyclonal antibody

Catalog # PAB22593 Size 100 uL

Applications



Immunohistochemistry (Formalin/PFA-fixed paraffin-embedded sections)

Immunohistochemical staining of human cerebellum with C2orf42 polyclonal antibody (Cat # PAB22593) shows strong, granular cytoplasmic positivity in Purkinje cells.

Specification

Product Description	Rabbit polyclonal antibody raised against recombinant C2orf42.
Immunogen	Recombinant protein corresponding to amino acids of human C2orf42.
Sequence	KVEVESIAETYGRIEKQPVLRLPLELKTFLKVGNTSPDQKEPTPFIIIEWIPDILPQSKIGELRIKFEYGGH RNGHVAEYQDQRPLDQPLELAPLT
Host	Rabbit
Reactivity	Human
Form	Liquid
Purification	Antigen affinity purification
Isotype	IgG
Recommend Usage	Immunohistochemistry (1:50-1:200) The optimal working dilution should be determined by the end user.
Storage Buffer	In PBS, pH 7.2 (40% glycerol, 0.02% sodium azide)

Storage Instruction

Store at 4°C. For long term storage store at -20°C.
Aliquot to avoid repeated freezing and thawing.

Note

This product contains sodium azide: a POISONOUS AND HAZARDOUS SUBSTANCE which should be handled by trained staff only.

Applications

- Immunohistochemistry (Formalin/PFA-fixed paraffin-embedded sections)

Immunohistochemical staining of human cerebellum with C2orf42 polyclonal antibody (Cat # PAB22593) shows strong, granular cytoplasmic positivity in Purkinje cells.

Gene Info — C2orf42

Entrez GeneID[54980](#)**Protein Accession#**[Q9NWW7](#)**Gene Name**

C2orf42

Gene Alias

FLJ20558

Gene Description

chromosome 2 open reading frame 42

Gene Ontology[Hyperlink](#)**Other Designations**

hypothetical protein LOC54980