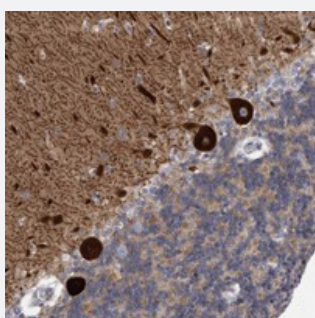


KCTD8 polyclonal antibody

Catalog # PAB22565 Size 100 uL

Applications



Immunohistochemistry (Formalin/PFA-fixed paraffin-embedded sections)

Immunohistochemical staining of human cerebellum with KCTD8 polyclonal antibody (Cat # PAB22565) shows strong cytoplasmic positivity in Purkinje cells at 1:20-1:50 dilution.

Specification

Product Description	Rabbit polyclonal antibody raised against recombinant KCTD8.
Immunogen	Recombinant protein corresponding to amino acids of human KCTD8.
Sequence	SEASTPQDNPSSAQQATAHQPNLTLD RPSKKAPVQWIPPPDKRRNSELFQTLISK SRETNLSK
Host	Rabbit
Reactivity	Human
Form	Liquid
Purification	Antigen affinity purification
Isotype	IgG
Recommend Usage	Immunohistochemistry (1:20-1:50) The optimal working dilution should be determined by the end user.
Storage Buffer	In PBS, pH 7.2 (40% glycerol, 0.02% sodium azide)
Storage Instruction	Store at 4°C. For long term storage store at -20°C. Aliquot to avoid repeated freezing and thawing.

Note

This product contains sodium azide: a POISONOUS AND HAZARDOUS SUBSTANCE which should be handled by trained staff only.

Applications

- Immunohistochemistry (Formalin/PFA-fixed paraffin-embedded sections)

Immunohistochemical staining of human cerebellum with KCTD8 polyclonal antibody (Cat # PAB22565) shows strong cytoplasmic positivity in Purkinje cells at 1:20-1:50 dilution.

Gene Info — KCTD8

Entrez GeneID	386617
---------------	------------------------

Protein Accession#	Q6ZWB6
--------------------	------------------------

Gene Name	KCTD8
-----------	-------

Gene Alias	-
------------	---

Gene Description	potassium channel tetramerisation domain containing 8
------------------	---

Gene Ontology	Hyperlink
---------------	---------------------------

Other Designations	OTTHUMP00000125257
--------------------	--------------------