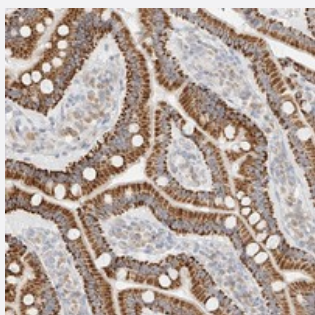


CXorf58 polyclonal antibody

Catalog # PAB22564 Size 100 uL

Applications



Immunohistochemistry (Formalin/PFA-fixed paraffin-embedded sections)

Immunohistochemical staining of human duodenum with CXorf58 polyclonal antibody (Cat # PAB22564) strong cytoplasmic positivity in glandular cells at 1:50-1:200 dilution.

Specification

Product Description	Rabbit polyclonal antibody raised against recombinant CXorf58.
Immunogen	Recombinant protein corresponding to amino acids of human CXorf58.
Sequence	THEILKKVAPLEAKLIKDPTMQCKIRFRFRGETFPPFVFKIFLHTDGHGYKYFSGKNVLMPPSSKAVD DACKLMGERKFFHRIIMEDER
Host	Rabbit
Reactivity	Human
Form	Liquid
Purification	Antigen affinity purification
Isotype	IgG
Recommend Usage	Immunohistochemistry (1:50-1:200) The optimal working dilution should be determined by the end user.
Storage Buffer	In PBS, pH 7.2 (40% glycerol, 0.02% sodium azide)

Storage Instruction

Store at 4°C. For long term storage store at -20°C.
Aliquot to avoid repeated freezing and thawing.

Note

This product contains sodium azide: a POISONOUS AND HAZARDOUS SUBSTANCE which should be handled by trained staff only.

Applications

- Immunohistochemistry (Formalin/PFA-fixed paraffin-embedded sections)

Immunohistochemical staining of human duodenum with CXorf58 polyclonal antibody (Cat # PAB22564) strong cytoplasmic positivity in glandular cells at 1:50-1:200 dilution.

Gene Info — CXorf58

Entrez GeneID [254158](#)

Protein Accession# [Q96LI9](#)

Gene Name CXorf58

Gene Alias FLJ25444

Gene Description chromosome X open reading frame 58

Gene Ontology [Hyperlink](#)

Other Designations OTTHUMP00000023070|hypothetical protein LOC254158