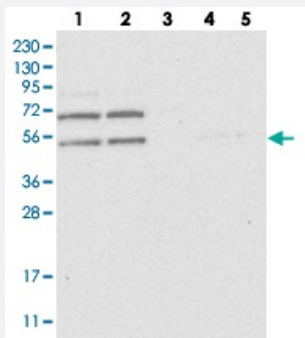


C2orf30 polyclonal antibody

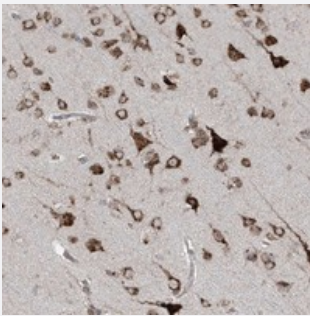
Catalog # PAB22560 Size 100 uL

Applications



Western Blot

Western blot analysis of Lane 1: RT-4, Lane 2: U-251 MG, Lane 3: Human Plasma, Lane 4: Liver, Lane 5: Tonsil with C2orf30 polyclonal antibody (Cat # PAB22560).



Immunohistochemistry (Formalin/PFA-fixed paraffin-embedded sections)

Immunohistochemical staining of human cerebral cortex with C2orf30 polyclonal antibody (Cat # PAB22560) shows cytoplasmic positivity in neuronal cells.

Specification

Product Description	Rabbit polyclonal antibody raised against recombinant C2orf30.
Immunogen	Recombinant protein corresponding to amino acids of human C2orf30.
Sequence	PYYPVGMGNGTPCSLKQNRPRSSTVMYICHPESKHEILSVAEVTTC EYEVVILTPLLCSHPKYRFR ASPVNDIFCQSLPGS
Host	Rabbit
Reactivity	Human
Form	Liquid

Purification	Antigen affinity purification
Isotype	IgG
Recommend Usage	Immunohistochemistry (1:50-1:200) Western Blot (1:250-1:500) The optimal working dilution should be determined by the end user.
Storage Buffer	In PBS, pH 7.2 (40% glycerol, 0.02% sodium azide)
Storage Instruction	Store at 4°C. For long term storage store at -20°C. Aliquot to avoid repeated freezing and thawing.
Note	This product contains sodium azide: a POISONOUS AND HAZARDOUS SUBSTANCE which should be handled by trained staff only.

Applications

- Western Blot

Western blot analysis of Lane 1: RT-4, Lane 2: U-251 MG, Lane 3: Human Plasma, Lane 4: Liver, Lane 5: Tonsil with C2orf30 polyclonal antibody (Cat # PAB22560).

- Immunohistochemistry (Formalin/PFA-fixed paraffin-embedded sections)

Immunohistochemical staining of human cerebral cortex with C2orf30 polyclonal antibody (Cat # PAB22560) shows cytoplasmic positivity in neuronal cells.

Gene Info — C2orf30

Entrez GeneID	27248
Protein Accession#	Q96DZ1
Gene Name	C2orf30
Gene Alias	CL24936, CL25084, ERLECTIN, XTP3-B, XTP3TPB
Gene Description	chromosome 2 open reading frame 30
Omim ID	611229
Gene Ontology	Hyperlink
Other Designations	XTP3-transactivated protein B