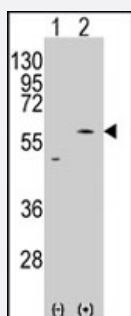


# SLC29A4 polyclonal antibody

Catalog # PAB2256

Size 400 uL

## Applications



### Western Blot (Transfected lysate)

Western blot analysis of PMAT (SLC29A4) (arrow) using rabbit SLC29A4 polyclonal antibody (Cat # PAB2256). 293 cell lysates (2 ug/lane) either nontransfected (Lane 1) or transiently transfected with the PMAT (SLC29A4) gene (Lane 2) (Origene Technologies).

## Specification

<b>Product Description</b>	Rabbit polyclonal antibody raised against synthetic peptide of SLC29A4.
<b>Immunogen</b>	A synthetic peptide (conjugated with KLH) corresponding to amino acids 459-489 at C-terminus of human SLC29A4.
<b>Host</b>	Rabbit
<b>Reactivity</b>	Human
<b>Form</b>	Liquid
<b>Purification</b>	Protein G purification
<b>Recommend Usage</b>	Western Blot (1:1000) The optimal working dilution should be determined by the end user.
<b>Storage Buffer</b>	In PBS (0.09% sodium azide)
<b>Storage Instruction</b>	Store at 4°C. For long term storage store at -20°C. Aliquot to avoid repeated freezing and thawing.
<b>Note</b>	This product contains sodium azide: a POISONOUS AND HAZARDOUS SUBSTANCE which should be handled by trained staff only.

## Applications

- Western Blot (Transfected lysate)

Western blot analysis of PMAT (SLC29A4) (arrow) using rabbit SLC29A4 polyclonal antibody (Cat # PAB2256). 293 cell lysates (2 ug/lane) either nontransfected (Lane 1) or transiently transfected with the PMAT (SLC29A4) gene (Lane 2) (Origene Technologies).

## Gene Info — SLC29A4

Entrez GeneID	<a href="#">222962</a>
Protein Accession#	<a href="#">NP_666369;Q8R139</a>
Gene Name	SLC29A4
Gene Alias	ENT4, FLJ34923, PMAT
Gene Description	solute carrier family 29 (nucleoside transporters), member 4
Omim ID	<a href="#">609149</a>
Gene Ontology	<a href="#">Hyperlink</a>
Gene Summary	This gene is a member of the SLC29 family and encodes a plasma membrane protein with 11 transmembrane helices. This protein catalyzes the reuptake of monoamines into presynaptic neurons, thus determining the intensity and duration of monoamine neural signaling. It has been shown to transport several compounds, including serotonin, dopamine, and the neurotoxin 1-methyl-4-phenylpyridinium. Alternate transcriptional splice variants which encode the same protein have been characterized. [provided by RefSeq]
Other Designations	OTTHUMP00000025415 equilibrative nucleoside transporter 4 plasma membrane monoamine transporter

## Publication Reference

- [Distribution and functional characterization of equilibrative nucleoside transporter-4, a novel cardiac adenosine transporter activated at acidic pH.](#)

Barnes K, Dobrzynski H, Foppolo S, Beal PR, Ismat F, Scullion ER, Sun L, Tellez J, Ritzel MW, Claycomb WC, Cass CE, Young JD, Billeter-Clark R, Boyett MR, Baldwin SA.

Circulation Research 2006 Sep; 99(5):510.

Application: IF, WB, Human, Mouse, Rat, Heart, HL-1 cells, HUVECs

- [Identification and characterization of a novel monoamine transporter in the human brain.](#)

Engel K, Zhou M, Wang J.

The Journal of Biological Chemistry 2004 Nov; 279(48):50042.

## Disease

- [Depressive Disorder](#)
- [Fatigue](#)
- [Sleep Disorders](#)
- [Sleep Initiation and Maintenance Disorders](#)