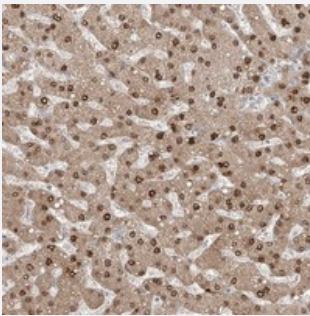


AOF1 polyclonal antibody

Catalog # PAB22537 Size 100 uL

Applications



Immunohistochemistry (Formalin/PFA-fixed paraffin-embedded sections)

Immunohistochemical staining of human liver with AOF1 polyclonal antibody (Cat # PAB22537) shows nuclear and cytoplasmic positivity in hepatocytes.

Specification

| | |
|---------------------|--|
| Product Description | Rabbit polyclonal antibody raised against recombinant AOF1. |
| Immunogen | Recombinant protein corresponding to amino acids of human AOF1. |
| Sequence | CEQLGISMHKFGERCGLIQEGGRITDPTIDKRMDFFHFNALLDVVSEWRKDKTQLQDVPLGEKIEEYKAFIKESGIQFSELEGQVLQFHLNLE |
| Host | Rabbit |
| Reactivity | Human |
| Form | Liquid |
| Purification | Antigen affinity purification |
| Isotype | IgG |
| Recommend Usage | Immunohistochemistry (1:20-1:50) The optimal working dilution should be determined by the end user. |
| Storage Buffer | In PBS, pH 7.2 (40% glycerol, 0.02% sodium azide) |

Storage Instruction

Store at 4°C. For long term storage store at -20°C.
Aliquot to avoid repeated freezing and thawing.

Note

This product contains sodium azide: a POISONOUS AND HAZARDOUS SUBSTANCE which should be handled by trained staff only.

Applications

- Immunohistochemistry (Formalin/PFA-fixed paraffin-embedded sections)

Immunohistochemical staining of human liver with AOF1 polyclonal antibody (Cat # PAB22537) shows nuclear and cytoplasmic positivity in hepatocytes.

Gene Info — AOF1

Entrez GeneID[221656](#)**Protein Accession#**[Q8NB78](#)**Gene Name**

AOF1

Gene Alias

C6orf193, DKFZp686I0412, FLJ33898, FLJ34109, FLJ43328, bA204B7.3, dJ298J15.2

Gene Description

amine oxidase (flavin containing) domain 1

Gene Ontology[Hyperlink](#)**Gene Summary**

flavin containing 1

Other Designations

OTTHUMP00000016075|OTTHUMP00000016077|OTTHUMP00000039336|amine oxidase, flavin containing 1