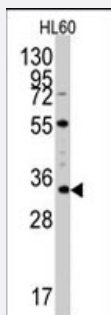


UBTD1 polyclonal antibody

Catalog # PAB2253

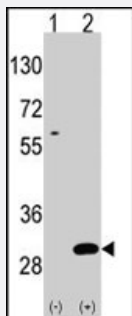
Size 400 uL

Applications



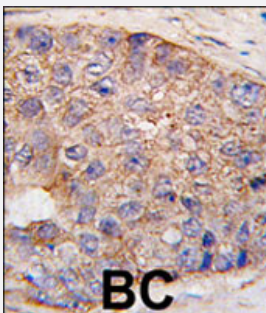
Western Blot (Cell lysate)

Western blot analysis of UBTD1 polyclonal antibody (Cat # PAB2253) in HeLa cell line lysates (35 ug/lane). UBTD1 (arrow) was detected using the purified polyclonal antibody.



Western Blot (Transfected lysate)

Western blot analysis of UBTD1 (arrow) using rabbit UBTD1 polyclonal antibody (Cat # PAB2253). 293 cell lysates (2 ug/lane) either nontransfected (Lane 1) or transiently transfected with the UBTD1 gene (Lane 2) (Origene Technologies).



Immunohistochemistry (Formalin/PFA-fixed paraffin-embedded sections)

Formalin-fixed and paraffin-embedded human breast carcinoma tissue reacted with UBTD1 polyclonal antibody (Cat # PAB2253), which was peroxidase-conjugated to the secondary antibody, followed by DAB staining. This data demonstrates the use of this antibody for immunohistochemistry; clinical relevance has not been evaluated.

Specification

Product Description

Rabbit polyclonal antibody raised against synthetic peptide of UBTD1.

Immunogen

A synthetic peptide (conjugated with KLH) corresponding to C-terminus of human UBTD1.

Host	Rabbit
Reactivity	Human
Form	Liquid
Purification	Protein A purification
Recommend Usage	Western Blot (1:1000) Immunohistochemistry (1:50) The optimal working dilution should be determined by the end user.
Storage Buffer	In PBS (0.09% sodium azide)
Storage Instruction	Store at 4°C. For long term storage store at -20°C. Aliquot to avoid repeated freezing and thawing.
Note	This product contains sodium azide: a POISONOUS AND HAZARDOUS SUBSTANCE which should be handled by trained staff only.

Applications

- Western Blot (Cell lysate)

Western blot analysis of UBTD1 polyclonal antibody (Cat # PAB2253) in HeLa cell line lysates (35 ug/lane). UBTD1 (arrow) was detected using the purified polyclonal antibody.

- Western Blot (Transfected lysate)

Western blot analysis of UBTD1 (arrow) using rabbit UBTD1 polyclonal antibody (Cat # PAB2253). 293 cell lysates (2 ug/lane) either nontransfected (Lane 1) or transiently transfected with the UBTD1 gene (Lane 2) (Origene Technologies).

- Immunohistochemistry (Formalin/PFA-fixed paraffin-embedded sections)

Formalin-fixed and paraffin-embedded human breast carcinoma tissue reacted with UBTD1 polyclonal antibody (Cat # PAB2253), which was peroxidase-conjugated to the secondary antibody, followed by DAB staining. This data demonstrates the use of this antibody for immunohistochemistry; clinical relevance has not been evaluated.

Gene Info — UBTD1

Entrez GeneID	80019
Protein Accession#	NP_079230;Q9HAC8
Gene Name	UBTD1
Gene Alias	FLJ11807

Gene Description	ubiquitin domain containing 1
Gene Ontology	Hyperlink
Other Designations	OTTHUMP00000020209

Publication Reference

- [Complete sequencing and characterization of 21,243 full-length human cDNAs.](#)

Ota T, Suzuki Y, Nishikawa T, Otsuki T, Sugiyama T, Irie R, Wakamatsu A, Hayashi K, Sato H, Nagai K, Kimura K, Makita H, Sekine M, Obayashi M, Nishi T, Shibahara T, Tanaka T, Ishii S, Yamamoto J, Saito K, Kawai Y, Isono Y, Nakamura Y, Nagahari K, Murakami K, Yasuda T, Iwayanagi T, Wagatsuma M, Shiratori A, Sudo H, Hosoiri T, Kaku Y, Kodaira H, Kondo H, Sugawara M, Takahashi M, Kanda K, Yokoi T, Furuya T, Kikkawa E, Omura Y, Abe K, Kamihara K, Katsuta N, Sato K, Tanikawa M, Yamazaki M, Ninomiya K

Nature Genetics 2003 Dec; 36(1):40.