

KT112 polyclonal antibody

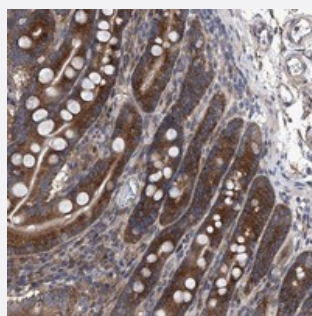
Catalog # PAB22527 Size 100 uL

Applications



Western Blot

Western blot analysis of Lane 1: RT-4, Lane 2: U-251 MG, Lane 3: Human Plasma, Lane 4: Liver, Lane 5: Tonsil with KT112 polyclonal antibody (Cat # PAB22527).



Immunohistochemistry (Formalin/PFA-fixed paraffin-embedded sections)

Immunohistochemical staining of human duodenum with KT112 polyclonal antibody (Cat # PAB22527) strong cytoplasmic positivity in glandular cells.

Specification

Product Description	Rabbit polyclonal antibody raised against recombinant KT112.
Immunogen	Recombinant protein corresponding to amino acids of human KT112.
Sequence	PLCLVYCVRPGGPIAGPQVAGANENPGRNVSVSWRPRAEEDGRAQAAGSSVLRELHTADSVVN GSAQADVPEKELEREESG
Host	Rabbit
Reactivity	Human
Form	Liquid

Purification	Antigen affinity purification
Isotype	IgG
Recommend Usage	Immunohistochemistry (1:200-1:500) Western Blot (1:250-1:500) The optimal working dilution should be determined by the end user.
Storage Buffer	In PBS, pH 7.2 (40% glycerol, 0.02% sodium azide)
Storage Instruction	Store at 4°C. For long term storage store at -20°C. Aliquot to avoid repeated freezing and thawing.
Note	This product contains sodium azide: a POISONOUS AND HAZARDOUS SUBSTANCE which should be handled by trained staff only.

Applications

- Western Blot

Western blot analysis of Lane 1: RT-4, Lane 2: U-251 MG, Lane 3: Human Plasma, Lane 4: Liver, Lane 5: Tonsil with KT12 polyclonal antibody (Cat # PAB22527).

- Immunohistochemistry (Formalin/PFA-fixed paraffin-embedded sections)

Immunohistochemical staining of human duodenum with KT12 polyclonal antibody (Cat # PAB22527) strong cytoplasmic positivity in glandular cells.

Gene Info — KT12

Entrez GeneID	112970
Protein Accession#	Q96EK9
Gene Name	KT12
Gene Alias	MGC20419, RP11-91A18.3, SBB181, TOT4
Gene Description	KT12 homolog, chromatin associated (S. cerevisiae)
Gene Ontology	Hyperlink
Gene Summary	O
Other Designations	KT12 homolog, chromatin associated OTTHUMP00000010301