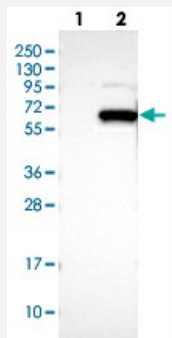


WDR23 polyclonal antibody

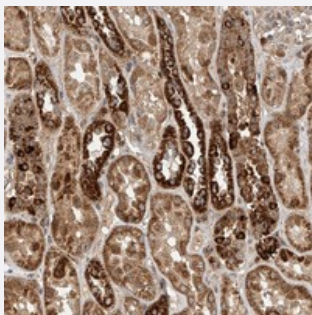
Catalog # PAB22521 Size 100 uL

Applications



Western Blot (Transfected lysate)

Western blot analysis of Lane 1: Negative control (vector only transfected HEK293T lysate), Lane 2: Over-expression Lysate (Co-expressed with a C-terminal myc-DDK tag (~3.1 kDa) in mammalian HEK293T cells) with WDR23 polyclonal antibody (Cat # PAB22521) at 1:250-1:500 dilution.



Immunohistochemistry (Formalin/PFA-fixed paraffin-embedded sections)

Immunohistochemical staining of human kidney with WDR23 polyclonal antibody (Cat # PAB22521) shows moderate to strong positivity in tubular cells at 1:20-1:50 dilution.

Specification

Product Description	Rabbit polyclonal antibody raised against recombinant WDR23.
Immunogen	Recombinant protein corresponding to amino acids of human WDR23.
Sequence	NSKDQTIKLWDIRRFSSREGMEASRQAATQQNWDYRWQQVPPKAWRKLKLPGDSSLMTYRGHG VLHTLIRCRFSPIHSTGQQFIYSGCSTGKVVYDLLSGHMKKLTNHHKACVRDVSWHPFEEKMVSSS WDG
Host	Rabbit
Reactivity	Human
Form	Liquid

Purification	Antigen affinity purification
Isotype	IgG
Recommend Usage	Immunohistochemistry (1:20-1:50) Western Blot (1:250-1:500) The optimal working dilution should be determined by the end user.
Storage Buffer	In PBS, pH 7.2 (40% glycerol, 0.02% sodium azide)
Storage Instruction	Store at 4°C. For long term storage store at -20°C. Aliquot to avoid repeated freezing and thawing.
Note	This product contains sodium azide: a POISONOUS AND HAZARDOUS SUBSTANCE which should be handled by trained staff only.

Applications

- Western Blot (Transfected lysate)

Western blot analysis of Lane 1: Negative control (vector only transfected HEK293T lysate), Lane 2: Over-expression Lysate (Co-expressed with a C-terminal myc-DDK tag (~3.1 kDa) in mammalian HEK293T cells) with WDR23 polyclonal antibody (Cat # PAB22521) at 1:250-1:500 dilution.

- Immunohistochemistry (Formalin/PFA-fixed paraffin-embedded sections)

Immunohistochemical staining of human kidney with WDR23 polyclonal antibody (Cat # PAB22521) shows moderate to strong positivity in tubular cells at 1:20-1:50 dilution.

Gene Info — WDR23

Entrez GeneID	80344
Protein Accession#	Q8TEB1
Gene Name	WDR23
Gene Alias	DKFZp779A1629, GL014, PRO2389
Gene Description	WD repeat domain 23
Gene Ontology	Hyperlink
Gene Summary	This gene encodes a WD repeat-containing protein that interacts with the COP9 signalosome, a macromolecular complex that interacts with cullin-RING E3 ligases and regulates their activity by hydrolyzing cullin-Nedd8 conjugates. Multiple alternatively spliced transcript variants have been found for this gene. [provided by RefSeq]

Other DesignationsOTTHUMP00000164696
