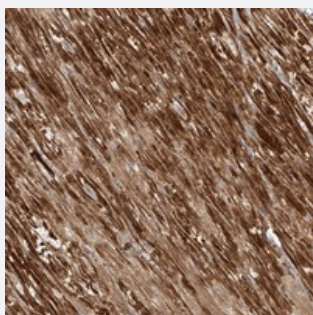


C20orf123 polyclonal antibody

Catalog # PAB22515 Size 100 uL

Applications



Immunohistochemistry (Formalin/PFA-fixed paraffin-embedded sections)

Immunohistochemical staining of human heart muscle with C20orf123 polyclonal antibody (Cat # PAB22515) shows cytoplasmic positivity in myocytes at 1:200-1:500 dilution.

Specification

| | |
|---------------------|--|
| Product Description | Rabbit polyclonal antibody raised against recombinant C20orf123. |
| Immunogen | Recombinant protein corresponding to amino acids of human C20orf123. |
| Sequence | RLQRRHDRHQGQQLPLGDPSCVPTPRPACKPPAWIDYRLDALRTESSEGEKELWSCRDLSCN LGPVPPPCVTLGKSLHLSEPRFLHLHNSIFTIDVTYFPRRDVVRMEGNTGHD |
| Host | Rabbit |
| Reactivity | Human |
| Form | Liquid |
| Purification | Antigen affinity purification |
| Isotype | IgG |
| Recommend Usage | Immunohistochemistry (1:200-1:500) The optimal working dilution should be determined by the end user. |
| Storage Buffer | In PBS, pH 7.2 (40% glycerol, 0.02% sodium azide) |

Storage Instruction

Store at 4°C. For long term storage store at -20°C.
Aliquot to avoid repeated freezing and thawing.

Note

This product contains sodium azide: a POISONOUS AND HAZARDOUS SUBSTANCE which should be handled by trained staff only.

Applications

- Immunohistochemistry (Formalin/PFA-fixed paraffin-embedded sections)

Immunohistochemical staining of human heart muscle with C20orf123 polyclonal antibody (Cat # PAB22515) shows cytoplasmic positivity in myocytes at 1:200-1:500 dilution.

Gene Info — C20orf123

Entrez GeneID[128506](#)**Protein Accession#**[Q9BR26](#)**Gene Name**

C20orf123

Gene Alias

dJ257E24.3

Gene Description

chromosome 20 open reading frame 123

Gene Ontology[Hyperlink](#)**Other Designations**

hypothetical protein LOC128506