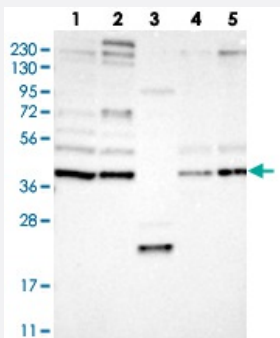


FRYL polyclonal antibody

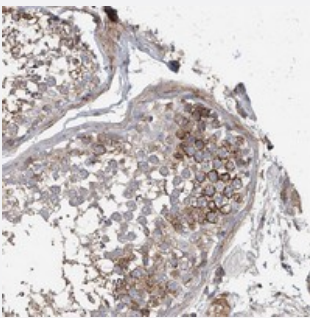
Catalog # PAB22514 Size 100 uL

Applications



Western Blot

Western blot analysis of Lane 1: RT-4, Lane 2: U-251 MG, Lane 3: Human Plasma, Lane 4: Liver, Lane 5: Tonsil with FRYL polyclonal antibody (Cat # PAB22514) at 1:250-1:500 dilution.



Immunohistochemistry (Formalin/PFA-fixed paraffin-embedded sections)

Immunohistochemical staining of human testis with FRYL polyclonal antibody (Cat # PAB22514) shows strong cytoplasmic positivity in subsets of cells in seminiferous ducts at 1:500-1:1000 dilution.

Specification

| | |
|----------------------------|---|
| Product Description | Rabbit polyclonal antibody raised against recombinant FRYL. |
| Immunogen | Recombinant protein corresponding to amino acids of human FRYL. |
| Sequence | AYCKLINQVNTIKNEAEVINMSEELAQLESILKEAESASENEEIDISKAAQTTIETAIHSLIETLKNKEFI SAVAQVKA |
| Host | Rabbit |
| Reactivity | Human, Mouse, Rat |
| Form | Liquid |

| | |
|---------------------|---|
| Purification | Antigen affinity purification |
| Isotype | IgG |
| Recommend Usage | Immunohistochemistry (1:500-1:1000) Western Blot (1:250-1:500) The optimal working dilution should be determined by the end user. |
| Storage Buffer | In PBS, pH 7.2 (40% glycerol, 0.02% sodium azide) |
| Storage Instruction | Store at 4°C. For long term storage store at -20°C. Aliquot to avoid repeated freezing and thawing. |
| Note | This product contains sodium azide: a POISONOUS AND HAZARDOUS SUBSTANCE which should be handled by trained staff only. |

Applications

- Western Blot

Western blot analysis of Lane 1: RT-4, Lane 2: U-251 MG, Lane 3: Human Plasma, Lane 4: Liver, Lane 5: Tonsil with FRYL polyclonal antibody (Cat # PAB22514) at 1:250-1:500 dilution.

- Immunohistochemistry (Formalin/PFA-fixed paraffin-embedded sections)

Immunohistochemical staining of human testis with FRYL polyclonal antibody (Cat # PAB22514) shows strong cytoplasmic positivity in subsets of cells in seminiferous ducts at 1:500-1:1000 dilution.

Gene Info — FRYL

| | |
|--------------------|----------------------------------|
| Entrez GeneID | 285527 |
| Protein Accession# | O94915 |
| Gene Name | FRYL |
| Gene Alias | DKFZp686E205, FLJ16177, KIAA0826 |
| Gene Description | FRY-like |
| Gene Ontology | Hyperlink |
| Other Designations | furry homolog-like furry-like |