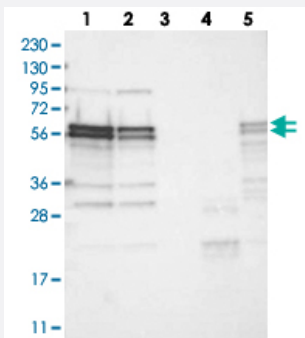


ZC3H15 polyclonal antibody

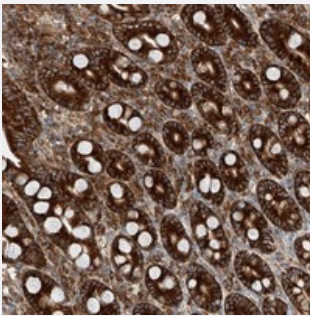
Catalog # PAB22511 Size 100 uL

Applications



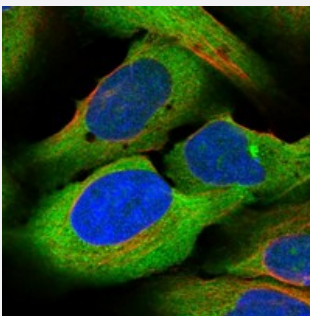
Western Blot

Western blot analysis of Lane 1: RT-4, Lane 2: U-251 MG, Lane 3: Human Plasma, Lane 4: Liver, Lane 5: Tonsil with ZC3H15 polyclonal antibody (Cat # PAB22511) at 1:250-1:500 dilution.



Immunohistochemistry (Formalin/PFA-fixed paraffin-embedded sections)

Immunohistochemical staining of human duodenum with ZC3H15 polyclonal antibody (Cat # PAB22511) strong cytoplasmic positivity in glandular cells at 1:1000-1:2500 dilution.



Immunofluorescence

Immunofluorescent staining of human cell line U-2 OS with ZC3H15 polyclonal antibody (Cat # PAB22511) at 1-4 ug/mL dilution shows positivity in nucleoli and cytoplasm.

Specification

Product Description

Rabbit polyclonal antibody raised against recombinant ZC3H15.

Immunogen

Recombinant protein corresponding to amino acids of human ZC3H15.

Sequence	LNELFKPVVAAQKISKGADPKSVVCAFFKQGQCTKGDCKKFSDLTLEKCEKRSVYIDARDEE LEKDTMDNWDEKKLEEVVNKKHGE
Host	Rabbit
Reactivity	Human, Mouse, Rat
Form	Liquid
Purification	Antigen affinity purification
Isotype	IgG
Recommend Usage	Immunohistochemistry (1:1000-1:2500) Western Blot (1:250-1:500) Immunofluorescence (1-4 ug/mL) The optimal working dilution should be determined by the end user.
Storage Buffer	In PBS, pH 7.2 (40% glycerol, 0.02% sodium azide)
Storage Instruction	Store at 4°C. For long term storage store at -20°C. Aliquot to avoid repeated freezing and thawing.
Note	This product contains sodium azide: a POISONOUS AND HAZARDOUS SUBSTANCE which should be handled by trained staff only.

Applications

- Western Blot

Western blot analysis of Lane 1: RT-4, Lane 2: U-251 MG, Lane 3: Human Plasma, Lane 4: Liver, Lane 5: Tonsil with ZC3H15 polyclonal antibody (Cat # PAB22511) at 1:250-1:500 dilution.

- Immunohistochemistry (Formalin/PFA-fixed paraffin-embedded sections)

Immunohistochemical staining of human duodenum with ZC3H15 polyclonal antibody (Cat # PAB22511) strong cytoplasmic positivity in glandular cells at 1:1000-1:2500 dilution.

- Immunofluorescence

Immunofluorescent staining of human cell line U-2 OS with ZC3H15 polyclonal antibody (Cat # PAB22511) at 1-4 ug/mL dilution shows positivity in nucleoli and cytoplasm.

Gene Info — ZC3H15

Entrez GeneID [55854](#)

Protein Accession# [Q8WU90](#)

Gene Name	ZC3H15
Gene Alias	HT010, LEREPO4, MSTP012
Gene Description	zinc finger CCCH-type containing 15
Gene Ontology	Hyperlink
Other Designations	erythropoietin 4 immediate early response