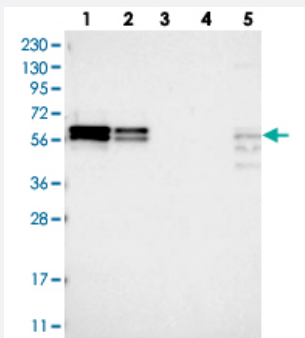


ZC3H15 polyclonal antibody

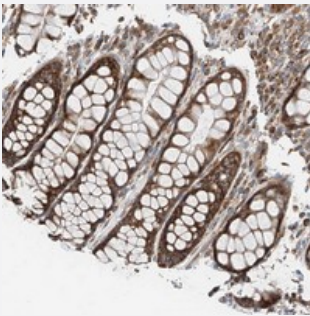
Catalog # PAB22510 Size 100 uL

Applications



Western Blot

Western blot analysis of Lane 1: RT-4, Lane 2: U-251 MG, Lane 3: Human Plasma, Lane 4: Liver, Lane 5: Tonsil with ZC3H15 polyclonal antibody (Cat # PAB22510).



Immunohistochemistry (Formalin/PFA-fixed paraffin-embedded sections)

Immunohistochemical staining of human rectum with ZC3H15 polyclonal antibody (Cat # PAB22510) strong cytoplasmic positivity in glandular cells.

Specification

Product Description	Rabbit polyclonal antibody raised against recombinant ZC3H15.
Immunogen	Recombinant protein corresponding to amino acids of human ZC3H15.
Sequence	AWKKRKRQEKIDKLEQDMERRKADFKAGKALVISGREVFEFRLPELVNDDDEEADDTRYTQGTG GDEVDDSVSVND
Host	Rabbit
Reactivity	Human, Mouse, Rat
Form	Liquid

Purification	Antigen affinity purification
Isotype	IgG
Recommend Usage	Immunohistochemistry (1:50-1:200) Western Blot (1:250-1:500) The optimal working dilution should be determined by the end user.
Storage Buffer	In PBS, pH 7.2 (40% glycerol, 0.02% sodium azide)
Storage Instruction	Store at 4°C. For long term storage store at -20°C. Aliquot to avoid repeated freezing and thawing.
Note	This product contains sodium azide: a POISONOUS AND HAZARDOUS SUBSTANCE which should be handled by trained staff only.

Applications

- Western Blot

Western blot analysis of Lane 1: RT-4, Lane 2: U-251 MG, Lane 3: Human Plasma, Lane 4: Liver, Lane 5: Tonsil with ZC3H15 polyclonal antibody (Cat # PAB22510).

- Immunohistochemistry (Formalin/PFA-fixed paraffin-embedded sections)

Immunohistochemical staining of human rectum with ZC3H15 polyclonal antibody (Cat # PAB22510) strong cytoplasmic positivity in glandular cells.

Gene Info — ZC3H15

Entrez GeneID	55854
Protein Accession#	Q8WU90
Gene Name	ZC3H15
Gene Alias	HT010, LEREPO4, MSTP012
Gene Description	zinc finger CCCH-type containing 15
Gene Ontology	Hyperlink
Other Designations	erythropoietin 4 immediate early response