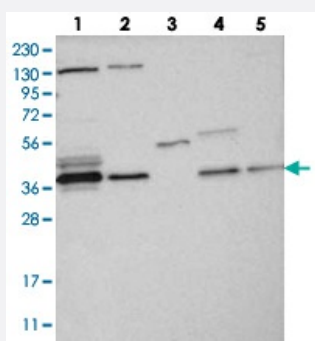


VTA1 polyclonal antibody

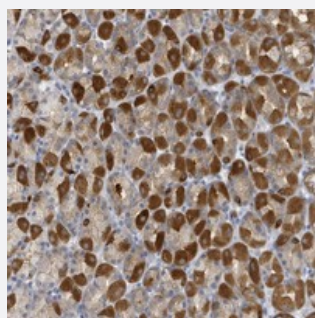
Catalog # PAB22500 Size 100 uL

Applications



Western Blot

Western blot analysis of Lane 1: RT-4, Lane 2: U-251 MG, Lane 3: Human Plasma, Lane 4: Liver, Lane 5: Tonsil with VTA1 polyclonal antibody (Cat # PAB22500) at 1:250-1:500 dilution.



Immunohistochemistry (Formalin/PFA-fixed paraffin-embedded sections)

Immunohistochemical staining of human stomach with VTA1 polyclonal antibody (Cat # PAB22500) shows strong cytoplasmic positivity in Parietal cells at 1:50-1:200 dilution.

Specification

Product Description	Rabbit polyclonal antibody raised against recombinant VTA1.
Immunogen	Recombinant protein corresponding to amino acids of human VTA1.
Sequence	FKSIQHHLRTAQEHDKRDPVVAYYCRLYAMQTGMKIDSKTPECRKFLSKLMDQLEALKKQLGDNEA
Host	Rabbit
Reactivity	Human, Mouse, Rat
Form	Liquid

Purification	Antigen affinity purification
Isotype	IgG
Recommend Usage	Immunohistochemistry (1:50-1:200) Western Blot (1:250-1:500) The optimal working dilution should be determined by the end user.
Storage Buffer	In PBS, pH 7.2 (40% glycerol, 0.02% sodium azide)
Storage Instruction	Store at 4°C. For long term storage store at -20°C. Aliquot to avoid repeated freezing and thawing.
Note	This product contains sodium azide: a POISONOUS AND HAZARDOUS SUBSTANCE which should be handled by trained staff only.

Applications

- Western Blot

Western blot analysis of Lane 1: RT-4, Lane 2: U-251 MG, Lane 3: Human Plasma, Lane 4: Liver, Lane 5: Tonsil with VTA1 polyclonal antibody (Cat # PAB22500) at 1:250-1:500 dilution.

- Immunohistochemistry (Formalin/PFA-fixed paraffin-embedded sections)

Immunohistochemical staining of human stomach with VTA1 polyclonal antibody (Cat # PAB22500) shows strong cytoplasmic positivity in Parietal cells at 1:50-1:200 dilution.

Gene Info — VTA1

Entrez GeneID	51534
Protein Accession#	Q9NP79
Gene Name	VTA1
Gene Alias	C6orf55, DRG-1, DRG1, FLJ27228, HSPC228, LIP5, My012, SBP1
Gene Description	Vps20-associated 1 homolog (S. cerevisiae)
Omim ID	610902
Gene Ontology	Hyperlink
Gene Summary	C6ORF55 encodes a protein involved in trafficking of the multivesicular body, an endosomal compartment involved in sorting membrane proteins for degradation in lysosomes (Ward et al., 2005 [PubMed 15644320]).[supplied by OMIM]

Other Designations

LYST-interacting protein 5|OTTHUMP00000017318|Vps20-associated 1 homolog|homolog of mouse SKD1-binding protein 1

Pathway

- [Endocytosis](#)