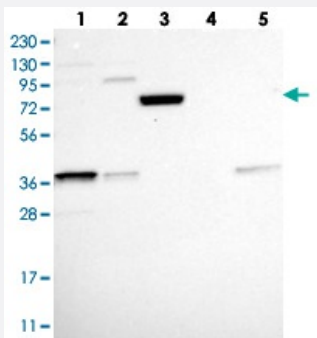


C14orf174 polyclonal antibody

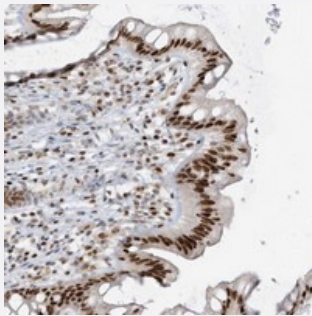
Catalog # PAB22479 Size 100 uL

Applications



Western Blot

Western blot analysis of Lane 1: RT-4, Lane 2: U-251 MG, Lane 3: Human Plasma, Lane 4: Liver, Lane 5: Tonsil with C14orf174 polyclonal antibody (Cat # PAB22479) at 1:250-1:500 dilution.



Immunohistochemistry (Formalin/PFA-fixed paraffin-embedded sections)

Immunohistochemical staining of human rectum with C14orf174 polyclonal antibody (Cat # PAB22479) shows strong nuclear positivity in glandular cells at 1:500-1:1000 dilution.

Specification

Product Description	Rabbit polyclonal antibody raised against recombinant C14orf174.
Immunogen	Recombinant protein corresponding to amino acids of human C14orf174.
Sequence	TSQEGIAKESKRDVPSETEPGIHQEVKSETSRMGEFFKDLEAPMDETHKESDLEPPEEAKPNV TEDVFLESAMETDPDPVP
Host	Rabbit
Reactivity	Human
Form	Liquid

Purification	Antigen affinity purification
Isotype	IgG
Recommend Usage	Immunohistochemistry (1:500-1:1000) Western Blot (1:250-1:500) The optimal working dilution should be determined by the end user.
Storage Buffer	In PBS, pH 7.2 (40% glycerol, 0.02% sodium azide)
Storage Instruction	Store at 4°C. For long term storage store at -20°C. Aliquot to avoid repeated freezing and thawing.
Note	This product contains sodium azide: a POISONOUS AND HAZARDOUS SUBSTANCE which should be handled by trained staff only.

Applications

- Western Blot

Western blot analysis of Lane 1: RT-4, Lane 2: U-251 MG, Lane 3: Human Plasma, Lane 4: Liver, Lane 5: Tonsil with C14orf174 polyclonal antibody (Cat # PAB22479) at 1:250-1:500 dilution.

- Immunohistochemistry (Formalin/PFA-fixed paraffin-embedded sections)

Immunohistochemical staining of human rectum with C14orf174 polyclonal antibody (Cat # PAB22479) shows strong nuclear positivity in glandular cells at 1:500-1:1000 dilution.

Gene Info — C14orf174

Entrez GeneID	161394
Protein Accession#	Q9P1V8
Gene Name	C14orf174
Gene Alias	FAM15A, FLJ35963, MGC132494, MGC132496
Gene Description	chromosome 14 open reading frame 174
Gene Ontology	Hyperlink
Gene Summary	member A hypothetical protein LOC161394
Other Designations	family with sequence similarity 15, member A hypothetical protein LOC161394