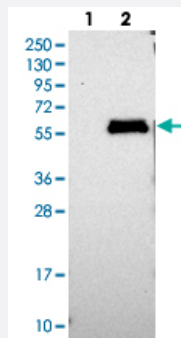


# LACE1 polyclonal antibody

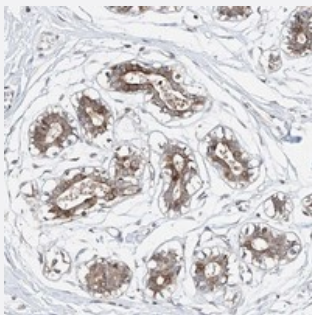
Catalog # PAB22475      Size 100 uL

## Applications



### Western Blot (Transfected lysate)

Western blot analysis of Lane 1: Negative control (vector only transfected HEK293T lysate), Lane 2: Over-expression Lysate (Co-expressed with a C-terminal myc-DDK tag (~3.1 kDa) in mammalian HEK293T cells) with LACE1 polyclonal antibody (Cat # PAB22475).



### Immunohistochemistry (Formalin/PFA-fixed paraffin-embedded sections)

Immunohistochemical staining of human breast with LACE1 polyclonal antibody (Cat # PAB22475) shows distinct cytoplasmic positivity in glandular cells.

## Specification

<b>Product Description</b>	Rabbit polyclonal antibody raised against recombinant LACE1.
<b>Immunogen</b>	Recombinant protein corresponding to amino acids of human LACE1.
<b>Sequence</b>	TFEELCERPLGASDYLELSKNFDTIFLRNIPQFTLANRTQGRRFITLIDNFYDLKVRICSASTPISSLFL HQHHDSELEQSRILMDDLGLSQDSAEGLSMFTG
<b>Host</b>	Rabbit
<b>Reactivity</b>	Human
<b>Form</b>	Liquid

Purification	Antigen affinity purification
Isotype	IgG
Recommend Usage	Immunohistochemistry (1:10-1:20) Western Blot (1:250-1:500) The optimal working dilution should be determined by the end user.
Storage Buffer	In PBS, pH 7.2 (40% glycerol, 0.02% sodium azide)
Storage Instruction	Store at 4°C. For long term storage store at -20°C. Aliquot to avoid repeated freezing and thawing.
Note	This product contains sodium azide: a POISONOUS AND HAZARDOUS SUBSTANCE which should be handled by trained staff only.

## Applications

- Western Blot (Transfected lysate)

Western blot analysis of Lane 1: Negative control (vector only transfected HEK293T lysate), Lane 2: Over-expression Lysate (Co-expressed with a C-terminal myc-DDK tag (~3.1 kDa) in mammalian HEK293T cells) with LACE1 polyclonal antibody (Cat # PAB22475).

- Immunohistochemistry (Formalin/PFA-fixed paraffin-embedded sections)

Immunohistochemical staining of human breast with LACE1 polyclonal antibody (Cat # PAB22475) shows distinct cytoplasmic positivity in glandular cells.

## Gene Info — LACE1

Entrez GeneID	<a href="#">246269</a>
Protein Accession#	<a href="#">Q8WV93</a>
Gene Name	LACE1
Gene Alias	AFG1
Gene Description	lactation elevated 1
Gene Ontology	<a href="#">Hyperlink</a>
Gene Summary	This gene encodes a protein with possible ATPase function. The protein contains a P-loop motif and a five-domain structure that is conserved in fly, yeast, and bacteria. Two conserved estrogen receptor binding sites are located within 2.5 kb of this gene. [provided by RefSeq]
Other Designations	ATPase family gene 1 homolog CG8520 gene product OTTHUMP00000016943

## Disease

- [Cardiovascular Diseases](#)
- [Diabetes Mellitus](#)
- [Edema](#)
- [Lactose Intolerance](#)
- [Tobacco Use Disorder](#)