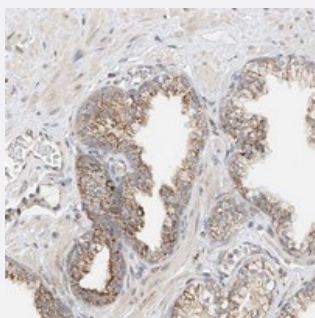


YIPF7 polyclonal antibody

Catalog # PAB22473 Size 100 uL

Applications



Immunohistochemistry (Formalin/PFA-fixed paraffin-embedded sections)

Immunohistochemical staining of human prostate with YIPF7 polyclonal antibody (Cat # PAB22473) shows moderate cytoplasmic positivity with a granular pattern in glandular cells.

Specification

Product Description	Rabbit polyclonal antibody raised against recombinant YIPF7.
Immunogen	Recombinant protein corresponding to amino acids of human YIPF7.
Sequence	LTVLNPMKPV DGSIMNETDLTGPI LFCVALGATLLLAG
Host	Rabbit
Reactivity	Human
Form	Liquid
Purification	Antigen affinity purification
Isotype	IgG
Recommend Usage	Immunohistochemistry (1:50-1:200) The optimal working dilution should be determined by the end user.
Storage Buffer	In PBS, pH 7.2 (40% glycerol, 0.02% sodium azide)
Storage Instruction	Store at 4°C. For long term storage store at -20°C. Aliquot to avoid repeated freezing and thawing.

Note

This product contains sodium azide: a POISONOUS AND HAZARDOUS SUBSTANCE which should be handled by trained staff only.

Applications

- Immunohistochemistry (Formalin/PFA-fixed paraffin-embedded sections)

Immunohistochemical staining of human prostate with YIPF7 polyclonal antibody (Cat # PAB22473) shows moderate cytoplasmic positivity with a granular pattern in glandular cells.

Gene Info — YIPF7

Entrez GeneID	285525
---------------	------------------------

Protein Accession#	Q8N8F6
--------------------	------------------------

Gene Name	YIPF7
-----------	-------

Gene Alias	FLJ39576, FinGER9, MGC120164
------------	------------------------------

Gene Description	Yip1 domain family, member 7
------------------	------------------------------

Gene Ontology	Hyperlink
---------------	---------------------------

Gene Summary	O
--------------	---

Other Designations	-
--------------------	---