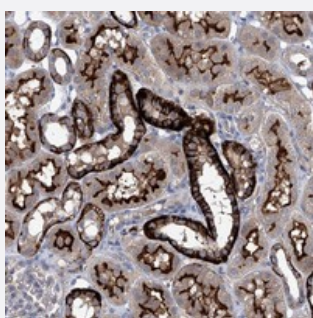


SBK2 polyclonal antibody

Catalog # PAB22471 Size 100 uL

Applications



Immunohistochemistry (Formalin/PFA-fixed paraffin-embedded sections)

Immunohistochemical staining of human kidney with SBK2 polyclonal antibody (Cat # PAB22471) shows strong cytoplasmic and membranous positivity in cells in tubules at 1:10-1:20 dilution.

Specification

Product Description	Rabbit polyclonal antibody raised against recombinant SBK2.
Immunogen	Recombinant protein corresponding to amino acids of human SBK2.
Sequence	PENVLVCDPACRRFKLTDFGHTRPRGTLRLAGPPPIPYTAPELCAPPPLPEGLPIQPALDAWALG VLLFCLLTGYFPWDRPLAEADPFYEDFLWQASGQPRDRPQPWFG LAPAADALLRGLLDPHPRR RSAVIAMEHL
Host	Rabbit
Reactivity	Human
Form	Liquid
Purification	Antigen affinity purification
Isotype	IgG
Recommend Usage	Immunohistochemistry (1:10-1:20) The optimal working dilution should be determined by the end user.
Storage Buffer	In PBS, pH 7.2 (40% glycerol, 0.02% sodium azide)

Storage Instruction

Store at 4°C. For long term storage store at -20°C.
Aliquot to avoid repeated freezing and thawing.

Note

This product contains sodium azide: a POISONOUS AND HAZARDOUS SUBSTANCE which should be handled by trained staff only.

Applications

- Immunohistochemistry (Formalin/PFA-fixed paraffin-embedded sections)

Immunohistochemical staining of human kidney with SBK2 polyclonal antibody (Cat # PAB22471) shows strong cytoplasmic and membranous positivity in cells in tubules at 1:10-1:20 dilution.

Gene Info — SBK2

Entrez GeneID[646643](#)**Protein Accession#**[P0C263](#)**Gene Name**

SBK2

Gene Alias

-

Gene Description

SH3-binding domain kinase family, member 2

Gene Ontology[Hyperlink](#)**Gene Summary**

O

Other Designations

-