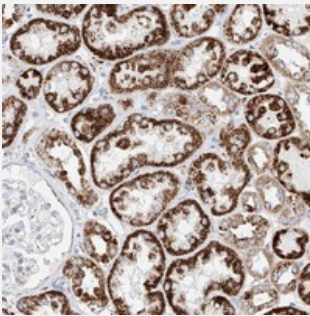


C6orf62 polyclonal antibody

Catalog # PAB22462 Size 100 uL

Applications



Immunohistochemistry (Formalin/PFA-fixed paraffin-embedded sections)

Immunohistochemical staining of human kidney with C6orf62 polyclonal antibody (Cat # PAB22462) shows strong cytoplasmic positivity in cells of tubules.

Specification

Product Description	Rabbit polyclonal antibody raised against recombinant C6orf62.
Immunogen	Recombinant protein corresponding to amino acids of human C6orf62.
Sequence	NSRKKQALNRLRAQLRKKKESLADQDFKMYAFVFKEKKKKSALFEVSEVIPVMTNNYEENILKGVRDS
Host	Rabbit
Reactivity	Human
Form	Liquid
Purification	Antigen affinity purification
Isotype	IgG
Recommend Usage	Immunohistochemistry (1:50-1:200) The optimal working dilution should be determined by the end user.
Storage Buffer	In PBS, pH 7.2 (40% glycerol, 0.02% sodium azide)

Storage Instruction

Store at 4°C. For long term storage store at -20°C.
Aliquot to avoid repeated freezing and thawing.

Note

This product contains sodium azide: a POISONOUS AND HAZARDOUS SUBSTANCE which should be handled by trained staff only.

Applications

- Immunohistochemistry (Formalin/PFA-fixed paraffin-embedded sections)

Immunohistochemical staining of human kidney with C6orf62 polyclonal antibody (Cat # PAB22462) shows strong cytoplasmic positivity in cells of tubules.

Gene Info — C6orf62

Entrez GeneID[81688](#)**Protein Accession#**[Q9GZU0](#)**Gene Name**

C6orf62

Gene Alias

DKFZp564G182, FLJ12619, Nbla00237, XTP12, dJ30M3.2

Gene Description

chromosome 6 open reading frame 62

Gene Ontology[Hyperlink](#)**Other Designations**

HBV X-transactivated protein 12|OTTHUMP00000016093|hypothetical protein LOC81688