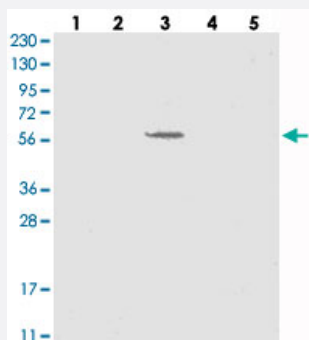


SLC43A3 polyclonal antibody

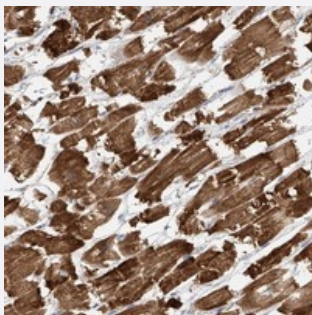
Catalog # PAB22458 Size 100 uL

Applications



Western Blot

Western blot analysis of Lane 1: RT-4, Lane 2: U-251 MG, Lane 3: Human Plasma, Lane 4: Liver, Lane 5: Tonsil with SLC43A3 polyclonal antibody (Cat # PAB22458).



Immunohistochemistry (Formalin/PFA-fixed paraffin-embedded sections)

Immunohistochemical staining of human heart muscle with SLC43A3 polyclonal antibody (Cat # PAB22458) shows strong cytoplasmic positivity in myocytes.

Specification

Product Description	Rabbit polyclonal antibody raised against recombinant SLC43A3.
Immunogen	Recombinant protein corresponding to amino acids of human SLC43A3.
Sequence	SFISVCS TWHVARTFLLMPRGHIPYLPNNYSYGLCPGNGTTKEEKETA EHENRELQSKEFLSA KEETPGAGQKQELRSFWSYAFSR
Host	Rabbit
Reactivity	Human
Form	Liquid

Purification	Antigen affinity purification
Isotype	IgG
Recommend Usage	Immunohistochemistry (1:50-1:200) Western Blot (1:250-1:500) The optimal working dilution should be determined by the end user.
Storage Buffer	In PBS, pH 7.2 (40% glycerol, 0.02% sodium azide)
Storage Instruction	Store at 4°C. For long term storage store at -20°C. Aliquot to avoid repeated freezing and thawing.
Note	This product contains sodium azide: a POISONOUS AND HAZARDOUS SUBSTANCE which should be handled by trained staff only.

Applications

- Western Blot

Western blot analysis of Lane 1: RT-4, Lane 2: U-251 MG, Lane 3: Human Plasma, Lane 4: Liver, Lane 5: Tonsil with SLC43A3 polyclonal antibody (Cat # PAB22458).

- Immunohistochemistry (Formalin/PFA-fixed paraffin-embedded sections)

Immunohistochemical staining of human heart muscle with SLC43A3 polyclonal antibody (Cat # PAB22458) shows strong cytoplasmic positivity in myocytes.

Gene Info — SLC43A3

Entrez GeneID	29015
Protein Accession#	Q8NBI5
Gene Name	SLC43A3
Gene Alias	DKFZp762A227, EEG1, FOAP-13, PRO1659, SEEEG-1
Gene Description	solute carrier family 43, member 3
Gene Ontology	Hyperlink
Gene Summary	O
Other Designations	likely ortholog of mouse embryonic epithelial gene 1