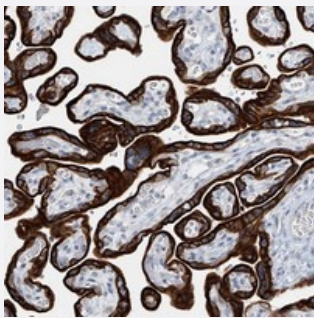


# RPTN polyclonal antibody

Catalog # PAB22453      Size 100 uL

## Applications



### Immunohistochemistry (Formalin/PFA-fixed paraffin-embedded sections)

Immunohistochemical staining of human placenta with RPTN polyclonal antibody (Cat # PAB22453) shows strong cytoplasmic and membranous positivity in trophoblastic cells.

## Specification

<b>Product Description</b>	Rabbit polyclonal antibody raised against recombinant RPTN.
<b>Immunogen</b>	Recombinant protein corresponding to amino acids of human RPTN.
<b>Sequence</b>	KSGSYCGQSERLGQELGCGQTDRQGQSSHYGQTDRQDQSYHYGQTDRQGQSSHYSTDRQGQSSHYSPDRQGQSSHYGQMD
<b>Host</b>	Rabbit
<b>Reactivity</b>	Human
<b>Form</b>	Liquid
<b>Purification</b>	Antigen affinity purification
<b>Isotype</b>	IgG
<b>Recommend Usage</b>	Immunohistochemistry (1:200-1:500) The optimal working dilution should be determined by the end user.
<b>Storage Buffer</b>	In PBS, pH 7.2 (40% glycerol, 0.02% sodium azide)

**Storage Instruction**

Store at 4°C. For long term storage store at -20°C.  
Aliquot to avoid repeated freezing and thawing.

**Note**

This product contains sodium azide: a POISONOUS AND HAZARDOUS SUBSTANCE which should be handled by trained staff only.

## Applications

- Immunohistochemistry (Formalin/PFA-fixed paraffin-embedded sections)

Immunohistochemical staining of human placenta with RPTN polyclonal antibody (Cat # PAB22453) shows strong cytoplasmic and membranous positivity in trophoblastic cells.

## Gene Info — RPTN

**Entrez GeneID** [126638](#)

**Protein Accession#** [Q6XPR3](#)

**Gene Name** RPTN

**Gene Alias** FLJ39117

**Gene Description** repetin

**Gene Ontology** [Hyperlink](#)

**Other Designations** intermediate filament-associated protein

## Disease

- [Disease Progression](#)
- [Disease Susceptibility](#)
- [HIV Infections](#)