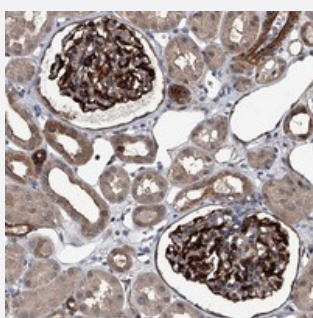


LDLRAD2 polyclonal antibody

Catalog # PAB22452 Size 100 uL

Applications



Immunohistochemistry (Formalin/PFA-fixed paraffin-embedded sections)

Immunohistochemical staining of human kidney with LDLRAD2 polyclonal antibody (Cat # PAB22452) shows distinct cytoplasmic and membranous positivity in cells in glomeruli at 1:200-1:500 dilution.

Specification

Product Description	Rabbit polyclonal antibody raised against recombinant LDLRAD2.
Immunogen	Recombinant protein corresponding to amino acids of human LDLRAD2.
Sequence	GMDNCGDGSDQGSWSPADCRGPSPVPSQTGSTDAHTSRSLTPSPALGSAGSLWIAAERSSPA GRDPTRQDAALEGSTE
Host	Rabbit
Reactivity	Human
Form	Liquid
Purification	Antigen affinity purification
Isotype	IgG
Recommend Usage	Immunohistochemistry (1:200-1:500) The optimal working dilution should be determined by the end user.
Storage Buffer	In PBS, pH 7.2 (40% glycerol, 0.02% sodium azide)

Storage Instruction

Store at 4°C. For long term storage store at -20°C.
Aliquot to avoid repeated freezing and thawing.

Note

This product contains sodium azide: a POISONOUS AND HAZARDOUS SUBSTANCE which should be handled by trained staff only.

Applications

- Immunohistochemistry (Formalin/PFA-fixed paraffin-embedded sections)

Immunohistochemical staining of human kidney with LDLRAD2 polyclonal antibody (Cat # PAB22452) shows distinct cytoplasmic and membranous positivity in cells in glomeruli at 1:200-1:500 dilution.

Gene Info — LDLRAD2

Entrez GeneID[401944](#)**Protein Accession#**[Q5SZI1](#)**Gene Name**

LDLRAD2

Gene Alias

-

Gene Description

low density lipoprotein receptor class A domain containing 2

Gene Ontology[Hyperlink](#)**Other Designations**

OTTHUMP00000002767|low density lipoprotein receptor A domain containing 2