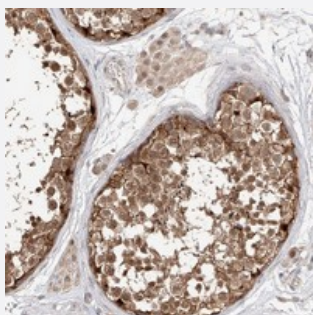


# MAGEB4 polyclonal antibody

Catalog # PAB22450      Size 100 uL

## Applications



### Immunohistochemistry (Formalin/PFA-fixed paraffin-embedded sections)

Immunohistochemical staining of human testis with MAGEB4 polyclonal antibody (Cat # PAB22450) shows moderate cytoplasmic and nuclear positivity in cells in seminiferous ducts at 1:200-1:500 dilution.

## Specification

Product Description	Rabbit polyclonal antibody raised against recombinant MAGEB4.
Immunogen	Recombinant protein corresponding to amino acids of human MAGEB4.
Sequence	KVGQPTAAEKEESPSSSSSVLRDTASSSLAFGIPQEPQREPPTTSAAAAAMSGTSDKGDESQDEENASSSQASTSTERSLKDLSLTKTKMLVQFLLYKYKMKEPTTKAEMLKISKKYKEHFPE
Host	Rabbit
Reactivity	Human
Form	Liquid
Purification	Antigen affinity purification
Isotype	IgG
Recommend Usage	Immunohistochemistry (1:200-1:500) The optimal working dilution should be determined by the end user.
Storage Buffer	In PBS, pH 7.2 (40% glycerol, 0.02% sodium azide)

**Storage Instruction**

Store at 4°C. For long term storage store at -20°C.  
Aliquot to avoid repeated freezing and thawing.

**Note**

This product contains sodium azide: a POISONOUS AND HAZARDOUS SUBSTANCE which should be handled by trained staff only.

## Applications

- Immunohistochemistry (Formalin/PFA-fixed paraffin-embedded sections)

Immunohistochemical staining of human testis with MAGEB4 polyclonal antibody (Cat # PAB22450) shows moderate cytoplasmic and nuclear positivity in cells in seminiferous ducts at 1:200-1:500 dilution.

## Gene Info — MAGEB4

**Entrez GeneID**[4115](#)**Protein Accession#**[O15481](#)**Gene Name**

MAGEB4

**Gene Alias**

MGC33144

**Gene Description**

melanoma antigen family B, 4

**Omim ID**[300153](#)**Gene Ontology**[Hyperlink](#)**Gene Summary**

This gene is a member of the MAGEB gene family. The members of this family have their entire coding sequences located in the last exon, and the encoded proteins show 50 to 68% sequence identity to each other. The promoters and first exons of the MAGEB genes show considerable variability, suggesting that the existence of this gene family enables the same function to be expressed under different transcriptional controls. The MAGEB genes are clustered on chromosome Xp22-p21. This gene sequence ends in the first intron of MAGEB1, another family member. This gene is expressed in testis. [provided by RefSeq]

**Other Designations**

melanoma-associated antigen B4