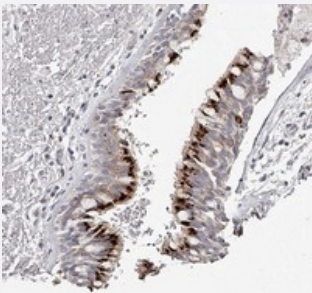


# SLC35D3 polyclonal antibody

Catalog # PAB22447      Size 100 uL

## Applications



### Immunohistochemistry (Formalin/PFA-fixed paraffin-embedded sections)

Immunohistochemical staining of human bronchus with SLC35D3 polyclonal antibody (Cat # PAB22447) shows strong cytoplasmic positivity, with a granular pattern, in respiratory epithelial cells.

## Specification

|                     |   |
|---------------------|---|
| Product Description | Rabbit polyclonal antibody raised against recombinant SLC35D3.  |
| Immunogen           | Recombinant protein corresponding to amino acids of human SLC35D3.  |
| Sequence            | RKQSNYEDLEAQPRGEEAQLSGDQLPFVMEELPGEGGNGRSEGGEAAGGPAQESRQEV RGSP<br>RGVPLVAGSSEEGSRRSLKDAYLEVWRLVRGTRYM    |
| Host                | Rabbit  |
| Reactivity          | Human   |
| Form                | Liquid  |
| Purification        | Antigen affinity purification   |
| Isotype             | IgG   |
| Recommend Usage     | Immunohistochemistry (1:500-1:1000)<br>The optimal working dilution should be determined by the end user. |
| Storage Buffer      | In PBS, pH 7.2 (40% glycerol, 0.02% sodium azide)   |

**Storage Instruction**

Store at 4°C. For long term storage store at -20°C.  
Aliquot to avoid repeated freezing and thawing.

**Note**

This product contains sodium azide: a POISONOUS AND HAZARDOUS SUBSTANCE which should be handled by trained staff only.

## Applications

- Immunohistochemistry (Formalin/PFA-fixed paraffin-embedded sections)

Immunohistochemical staining of human bronchus with SLC35D3 polyclonal antibody (Cat # PAB22447) shows strong cytoplasmic positivity, with a granular pattern, in respiratory epithelial cells.

## Gene Info — SLC35D3

**Entrez GeneID**[340146](#)**Protein Accession#**[Q5M8T2](#)**Gene Name**

SLC35D3

**Gene Alias**

FRCL1, MGC102873, bA55K22.3

**Gene Description**

solute carrier family 35, member D3

**Gene Ontology**[Hyperlink](#)**Gene Summary**

O

**Other Designations**

frc, fringe-like 1